



JCB LUBRICANTS | NO COMPROMISE



JCB LUBRICANTS NO COMPROMISE.

JCB NEVER COMPROMISES WHEN IT COMES TO THE STRENGTH AND PERFORMANCE OF ITS MACHINES. SO, WE HAVE ALSO MADE SURE THAT YOU CAN KEEP YOUR INVESTMENT OPERATING AT PEAK PERFORMANCE AND PRODUCTIVITY WITH A RANGE OF LUBRICANTS, GREASES AND ACCESSORIES DESIGNED SPECIFICALLY FOR YOU AND YOUR MACHINE.



The comprehensive range of JCB lubricants has been approved by JCB engineers to ensure that your engine, transmission, hydraulic system and other key components receive the optimum level of protection, lengthening component life and keeping down your costs of ownership.

Industry standard approvals are also quoted to allow JCB oils to be used in other non JCB machines.

OIL TESTING AND JCB STANDARDS

JCB oils undertake a rigorous programme of testing to ensure that they provide the maximum performance and protection for your JCB machine. JCB Engineering standards lay down performance levels and criteria that have to be met, which EXCEED OIL INDUSTRY STANDARDS.

A typical example of this is to help prevent hydraulic system contamination all JCB Hydraulic fluids are filtered down to 3 microns an extremely stringent requirement, unique to JCB.

To be sure that your lubricants adhere to the standards look out for the JCB standards approved sign:



For complete information on testing and JCB standards see the JCB lubricants videos which give details of JCB lubricants testing. In addition they show how JCB oils perform when tested against industry standard requirements and also against non JCB oils.

CONTENTS

| | |
|-----------------------------------|----|
| Hydraulic Fluid | 04 |
| Engine Oil | 10 |
| Gear Oil | 16 |
| Transmission Fluids | 20 |
| Grease | 24 |
| Ancillary Products | 26 |
| Accessories | 30 |
| Oil and Diesel Fuel Sampling | 32 |
| Paint Selector | 33 |
| The Complete Range by Part Number | 34 |

HYDRAULIC FLUID.

MAINTAINING A SUPER CLEAN HYDRAULIC SYSTEM ENSURES MINIMUM DOWNTIME AND MAXIMUM EFFICIENCY. GENUINE JCB HYDRAULIC FLUIDS FEATURE HIGH QUALITY BASE OIL AND SOPHISTICATED ADDITIVES, FILTERED TO HIGHER THAN INDUSTRY STANDARD LEVELS TO ENSURE MAXIMUM COMPONENT LIFE.

To help prevent system contamination all JCB hydraulic fluids are filtered down to 3 microns an extremely stringent requirement – **UNIQUE TO JCB.**

Choosing anything else but the approved JCB oil is a false economy which can lead to inefficient machine operation, component wear and ultimately premature component failure.

Hydraulic fluid testing

JCB hydraulic fluids undertake a rigorous programme of testing to ensure that they provide the maximum performance and protection for your JCB machine and its hydraulic system.

JCB Engineering standards lay down performance levels and criteria for JCB Hydraulic fluid which EXCEED OIL INDUSTRY STANDARDS. Below are examples of how JCB hydraulic fluids outperform other hydraulic fluids that claim to be the same.

Demulsifying test:

JCB hydraulic fluid is designed to help prevent water contamination.

In the Demulsifying test the industry standard requirement is for hydraulic fluid and water to separate, at the latest, 30 minutes after being mixed together, so the water can be filtered out of the system. If water is not removed quickly from the hydraulic system it can cause:

- General reduction in the efficiency of the hydraulic fluid
- Component corrosion
- Reduction in viscosity and subsequent premature component wear
- Reduction in cooling properties within the hydraulic fluid



JCB oil separates from water in just 5 minutes! - Some low cost, poor quality oil fail to separate, even after 30 minutes. **In this test the JCB product clearly outperformed both the low cost alternative and the industry standard requirement.**

Foam test:

This is a simple test where heat is applied to hydraulic fluid, it is designed to measure the levels of foam or air bubbles generated.

Minimising air bubbles in your hydraulic fluid caused by foam is essential as air bubbles cause cavitation which in turn can cause:

- Spongy hydraulic control response
- Heat retention (overheating) in the hydraulic fluid tank
- Poor oil flow around the hydraulic system
- Component wear, (due to an inconsistent film of oil on components)
- Ultimately premature failure



It can be clearly seen that poor quality low cost oils do not contain the same level of anti-foam additives. **In this test the JCB product clearly outperformed the low cost alternative.**



JCB STANDARD:
4002/2800

JCB HYDRAULIC FLUID UP 32

JCB Ultra Performance Hydraulic Fluid 32 is specifically developed for construction equipment operated under wide extremes of temperature. The product provides outstanding low (pour point of -51°C) and high temperature viscosity characteristics. JCB UP Hydraulic Fluid 32 is also a long term stable fluid with optimum anti-wear performance.

BENEFITS

- Ultra anti-wear performance, based on ash-less anti-wear additive technology.
- Suitable arctic conditions due to outstanding low temperature viscosity.
- Long term stable fluid viscosity through excellent shear stability characteristics of the selected viscosity index improver.
- JCB UP32 surpassed the ISO 11158 HV requirements.
- An ideal cold climate hydraulic fluid.
- Ideal for JCB machines in extreme cold climate conditions.

PERFORMANCE CLASSIFICATION

DIN 51524 PART 3 CATEGORY HVLP.
JCB UP32 SURPASSED THE ISO 11158 HV REQUIREMENTS.

MANUFACTURERS' STANDARDS

Swedish Defence FSD 8401. Volvo STD 1286 07. SS 155434 category AV.
DIN 51524 Part 3 category HVLP.

| Description | Pack Size | Part Number |
|---------------------------|-----------|-------------|
| JCB Hydraulic Fluid UP 32 | 20L | 4002/2805 |
| JCB Hydraulic Fluid UP 32 | 200L | 4002/2803 |



JCB STANDARD:
4002/2000

JCB HYDRAULIC FLUID OP 46

JCB Optimum Performance Hydraulic Fluid 46 is a top quality hydraulic oil that meets the arduous demands of most off highway plant and stationary hydraulic systems exposed to wide temperature fluctuations.

In particular it protects against shearing, which is the permanent loss of viscosity due to mechanical or oxidation breakdown. It also offers excellent protection against rust, corrosion and metal fatigue, combined with "keep clean" additives to prevent clogging of filters, ensuring long life to the system's components. This hydraulic fluid may be offered to those demanding the highest quality lubricants available. Tests by JCB engineers have shown that use of this fluid can reduce fuel consumption and improve machine productivity.

BENEFITS

- Optimum anti-wear performance throughout its service life.
- Next generation hydraulic fluid.
- Wide application temperature range (-25°C to 190°C).
- Trouble-free operation due to the unique combination of outstanding demulsibility, foam, air release, hydrolytic stability and filterability.
- Provides extremely responsive controls, particularly with servo controls.

PERFORMANCE CLASSIFICATION

DIN 51524 PART 3 CATEGORY HVLP.

MANUFACTURERS' STANDARDS

ISO 11158 category HV. DIN 51524 Part 3 category HVLP. SS 155434 category AV.
Denison HF-0, HF-1, HF-2. AFNOR 48-603 category HV.

| Description | Pack Size | Part Number |
|---------------------------|---------------|-------------|
| JCB Hydraulic Fluid OP 46 | 4x5L | 4002/2001 |
| JCB Hydraulic Fluid OP 46 | 20L | 4002/2005 |
| JCB Hydraulic Fluid OP 46 | 200L | 4002/2003 |
| JCB Hydraulic Fluid OP 46 | 1,000L - IBC | 4002/2045 |
| JCB Hydraulic Fluid OP 46 | Bulk Pump off | On request |



JCB STANDARD:
4002/2700

JCB HYDRAULIC FLUID OP 68

JCB Optimum Performance (OP) Hydraulic Fluid 68 is a quality, shear stable top tier hydraulic oil. It has been developed for off highway equipment and other hydraulic systems exposed to wide temperature fluctuations. This is a Maximum efficiency Hydraulic Fluid (MEHF).

In particular it protects against shearing, which is the permanent loss of viscosity due to mechanical or oxidation breakdown. It also offers excellent protection against rust, corrosion and metal fatigue, combined with "keep clean" additives to prevent clogging of filters, ensuring long life to the system's components. This hydraulic fluid may be offered to those demanding the highest quality lubricants available. Tests by JCB engineers have shown that use of this fluid can reduce fuel consumption and improve machine productivity.

BENEFITS

- Optimum anti-wear performance, based on a zinc dialkylthiophosphate additive
- Next generation hydraulic fluid.
- Wide application temperature range (-25°C to 190°C).
- Trouble-free operation due to the unique combination of outstanding demulsibility, foam, air release, hydrolytic stability and filterability.
- Provides extremely responsive controls, particularly with servo controls.

PERFORMANCE CLASSIFICATION

DIN 51524 PART 3 CATEGORY HVLP.

MANUFACTURERS' STANDARDS

ISO 11158 category HV. DIN 51524 Part 3 category HVLP. SS 155434 category AV.
Denison HF-0, HF-1, HF-2. AFNOR 48-603 category HV.

| Description | Pack Size | Part Number |
|---------------------------|---------------|-------------|
| JCB Hydraulic Fluid OP 68 | 4x5L | 4002/2701 |
| JCB Hydraulic Fluid OP 68 | 20L | 4002/2705 |
| JCB Hydraulic Fluid OP 68 | 200L | 4002/2703 |
| JCB Hydraulic Fluid OP 68 | 1,000L - IBC | 4002/2745 |
| JCB Hydraulic Fluid OP 68 | Bulk Pump off | On request |

HYDRAULIC FLUID.



JCB HYDRAULIC FLUID EP 46

A high viscosity index (VI) multigrade antiwear hydraulic fluid, which retains its multigrade properties over a wide range of applications and climatic conditions. Manufactured from the highest quality solvent refined base stocks and special additives, it will remain at specification throughout its life, giving superb performance between service intervals.

JCB STANDARD:
4002/1600

BENEFITS

- Extreme anti-wear performance, based on a zinc dialkyldithiophosphate additive.
- Wide application temperature range (through outstanding low and high temperature viscosity characteristics).
- Trouble-free operation due to the unique combination of outstanding demulsibility, foam, air release, hydrolytic stability and filterability.
- Long term stable fluid viscosity through excellent shear stability characteristics of the selected viscosity index improver.
- JCB hydraulic fluid EP46 meets the requirements of most off highway equipment manufacturers.
- The zinc based additive package meets Denison HF-0, HF-1 and HF-2 requirements.

PERFORMANCE CLASSIFICATION

DIN 51524 PART 3 CATEGORY HVLP. DIN 51502 CATEGORY HVLP.

MANUFACTURERS' STANDARDS

ISO 11158 category HV. ISO 6743-4 category HR and HV. AFNOR 48-603 category HV. AFNOR NFE 48-690 (dry), 691 (wet). SS 155434 category MV. Vickers M-2950-s (Mobile). Vickers I-286-S. Cincinnati Milacron P-68 (ISO VG 32). P-69 (ISO VG 68) and P-70 (ISO VG 46). US Steel 126, 127. Poclain Excavators ISO 46.

| Description | Pack Size | Part Number |
|---------------------------|---------------|-------------|
| JCB Hydraulic Fluid EP 46 | 20L | 4002/1605 |
| JCB Hydraulic Fluid EP 46 | 200L | 4002/1603 |
| JCB Hydraulic Fluid EP 46 | 1,000L - IBC | 4002/1645 |
| JCB Hydraulic Fluid EP 46 | Bulk Pump off | 4002/1615 |



JCB HYDRAULIC FLUID HP 15

A premium, shear stable anti wear ISO 15 mineral hydraulic fluid, formulated for good low flow characteristics at low ambient temperatures.

JCB STANDARD:
4002/0500

BENEFITS

- Extreme anti-wear performance, based on a zinc dialkyldithiophosphate additive.
- Wide application temperature range (through outstanding low and high temperature viscosity characteristics).
- Trouble-free operation due to the unique combination of outstanding demulsibility, foam, air release, hydrolytic stability and filterability.
- Long term stable fluid viscosity through excellent shear stability characteristics of the selected viscosity index improver.
- JCB HP 15 Hydraulic fluid meets the requirements of most off highway equipment manufacturers.

PERFORMANCE CLASSIFICATION

DIN 51524 PART 3 CATEGORY HVLP. DIN 51502 CATEGORY HVLP.

MANUFACTURERS' STANDARDS

ISO 11158 category HV. ISO 6743-4 category HR and HV. AFNOR 48-603 category HV. AFNOR NFE 48-690 (dry), 691 (wet). SS 155434 category MV. Vickers M-2950-s (Mobile). Vickers I-286-S. Cincinnati Milacron P-68 (ISO VG 32), P-69 (ISO VG 68) and P-70 (ISO VG 46). US Steel 126, 127. Poclain Excavators ISO 46.

| Description | Pack Size | Part Number |
|---------------------------|-----------|-------------|
| JCB Hydraulic Fluid HP 15 | 12x1L | 4002/0501 |
| JCB Hydraulic Fluid HP 15 | 4x5L | 4002/0503 |



JCB HYDRAULIC FLUID HP 32

A high quality hydraulic fluid, based on the latest low zinc technology, combining anti-wear performance with excellent filterability in both wet and dry conditions.

JCB STANDARD:
4002/1000

Specially formulated from solvent refined base oil, containing a superior additive package, which not only provides outstanding performance but also reduces pump, motor and valve wear. JCB Hydraulic Fluid HP 32 provides excellent protection against corrosion and metal fatigue, combined with superb filterability characteristics ensuring long service life.

BENEFITS

- High anti-wear hydraulic performance, based on a zincdialkyldithiophosphate additive technology.
- Lasts throughout its prescribed service life (due to high thermal and oxidation stability for high temperature applications).
- Trouble-free operation due to the unique combination of outstanding demulsibility, foam, air release, hydrolytic stability and filterability characteristics.
- Can also be applied in other industrial equipment such as screw-air compressors and not severely loaded gears.

PERFORMANCE CLASSIFICATION

DIN 51524 PART 2 CATEGORY HLP. DIN 51502 CATEGORY HLP.

MANUFACTURERS' STANDARDS

ISO 11158 category HM. ISO 6743-4 category HM. SS 155434 category AM (not ISO VG 100). DIN 51524 Part 2 category HLP. DIN 51502 category HLP. MAG IAS P-68 (ISO VG 32). P-69 (ISO VG 68) and P-70 (ISO VG 46). Denison HF-O, HF-1 & HF-2. AFNOR 48-603 category HM. Eaton Brochure 03-401-2010.

| Description | Pack Size | Part Number |
|---------------------------|---------------|-------------|
| JCB Hydraulic Fluid HP 32 | 4x5L | 4002/1001 |
| JCB Hydraulic Fluid HP 32 | 20L | 4002/1025 |
| JCB Hydraulic Fluid HP 32 | 200L | 4002/1024 |
| JCB Hydraulic Fluid HP 32 | 1,000L - IBC | 4002/1045 |
| JCB Hydraulic Fluid HP 32 | Bulk Pump off | 4002/1015 |



JCB STANDARD:
4002/0800

JCB HYDRAULIC FLUID HP 46

A top quality hydraulic fluid based on the latest low zinc technology, combining anti-wear performance with excellent filterability in both wet and dry conditions.

Specially formulated from solvent refined base oil, containing a superior additive package, which not only provides outstanding performance but also reduces pump, motor and valve wear. JCB Hydraulic Fluid HP 46 provides excellent protection against corrosion and metal fatigue, combined with superb filterability characteristics ensuring quality throughout service life.

BENEFITS

- High anti-wear performance, based on a zincdiaklydithiophosphate additive technology.
- Lasts throughout its prescribed service life (due to high thermal and oxidation stability for high temperature applications).
- Suitable for use in both JCB and non-JCB machines.
- Trouble-free operation due to the unique combination of outstanding demulsibility, foam, air release, hydrolytic stability and filterability characteristics.
- Can also be applied in other industrial equipment such as screw-air compressors and not severely loaded gears.

PERFORMANCE CLASSIFICATION

DIN 51524 PART 2 CATEGORY HLP. DIN 51502 CATEGORY HLP.

MANUFACTURERS' STANDARDS

ISO 11158, category HM. ISO 6743-4 category HM. SS 155434 category AM (not ISO VG 100). DIN 51524 Part 2 category HLP. DIN 51502 category HLP. MAG IAS P-68 (ISO VG 32). P-69 (ISO VG 68) and P-70 (ISO VG 46). Denison HF-O, HF-1 & HF-2. AFNOR 48-603, category HM. Eaton Brochure 03-401-2010

| Description | Pack Size | Part Number |
|---------------------------|---------------|-------------|
| JCB Hydraulic Fluid HP 46 | 4x5L | 4002/0801 |
| JCB Hydraulic Fluid HP 46 | 20L | 4002/0805 |
| JCB Hydraulic Fluid HP 46 | 200L | 4002/0803 |
| JCB Hydraulic Fluid HP 46 | 1,000L - IBC | 4002/0845 |
| JCB Hydraulic Fluid HP 46 | Bulk Pump off | 4002/0815 |



JCB STANDARD:
4002/0700

JCB HYDRAULIC FLUID HP 68

A top quality anti-wear hydraulic oil, specially designed to meet the stringent filterability requirements of modern tools and electro-hydraulic systems, for use in machines where accurate indexing, positioning and sequencing depends on oil quality. Manufactured from the highest quality solvent refined base stocks and special additives. The formulation is based on the latest low-zinc technology, combining high anti-wear performance with excellent filterability in both wet and dry conditions. It is fully inhibited to keep systems free of corrosion and sludging and is highly resistant to foaming.

BENEFITS

- High anti-wear hydraulic performance, based on a zincdiaklydithiophosphate additive technology.
- Lasts throughout its prescribed service life (due to high thermal and oxidation stability for high temperature applications).
- Suitable for use in JCB and many non-JCB machines.
- Trouble-free operation due to the unique combination of outstanding demulsibility, foam, air release, hydrolytic stability and filterability characteristics.
- Can also be applied in other industrial equipment such as screw-air compressors and not severely loaded gears.

PERFORMANCE CLASSIFICATION

DIN 51524 PART 2 CATEGORY HLP. DIN 51502 CATEGORY HLP.

MANUFACTURERS' STANDARDS

ISO 11158 category HM. ISO 6743-4 category HM. SS 155434 category AM (not ISO VG 100). DIN 51524 Part 2 category HLP. DIN 51502 category HLP. MAG IAS P-68 (ISO VG 32). P-69 (ISO VG 68) and P-70 (ISO VG 46). Denison HF-O, HF-1 & HF-2. AFNOR 48-603 category HM. Eaton Brochure 03-401-2010.

| Description | Pack Size | Part Number |
|---------------------------|-----------|-------------|
| JCB Hydraulic Fluid HP 68 | 20L | 4002/0705 |
| JCB Hydraulic Fluid HP 68 | 200L | 4002/0701 |



JCB STANDARD:
4002/2600

JCB HYDRAULIC FLUID BIODEGRADABLE 46

This oil is suitable for most types of hydraulic plant and equipment, where leaks or accidental spillage could result in the contamination of soil, water or ground water. It is also compatible with all previous JCB Biodegradable Hydraulic Oil offerings. Typical uses include: mobile plant associated with forestry, water management, inland waterways, dockyards, agriculture, construction, quarrying, refuse collection, landfill, water treatment, road building, railroads and mining.

It is a non mineral, ecologically acceptable hydraulic fluid (EAHF) based on Synthetic Ester technology, which ensures equal high temperature and anti-wear performance to that of conventional mineral hydraulic oils. It meets the requirements of VDMA (draft DIN for EAHF's) HEES 46 and is 100% Biodegradable under the CEC L-33-T-82 method.

BENEFITS

- High degree of biodegradability.
- Reduces risks to the aquatic environment.
- Does not induce long term effects to the aquatic environment.
- Mineral oil free, special additive packs.
- Wide application temperature range due to low pour point and high viscosity index.
- Compatible with mineral and rapeseed oils.
- Lasts throughout its prescribed service life due to high oxidation stability.

PERFORMANCE CLASSIFICATION

DIN 51524 PART 2 CATEGORY HLP. DIN 51502 CATEGORY HLP.

MANUFACTURERS' STANDARDS

ISO 11158 category HV (except oxidation stability D 943). DIN 51524 Part 3 category HVLp (except oxidation stability D 943). Draft DIN specification for HE type fluids. ISO 15380, HEES type. SS 155434 category BV. VDMA 24586. Denison HF-2 and HF-6. Bosch Rexroth (HEES type).

| Description | Pack Size | Part Number |
|--------------------------------------|---------------|-------------|
| JCB Hydraulic Fluid Biodegradable 46 | 20L | 4002/2605 |
| JCB Hydraulic Fluid Biodegradable 46 | 200L | 4002/2603 |
| JCB Hydraulic Fluid Biodegradable 46 | 1,000L - IBC | 4002/2645 |
| JCB Hydraulic Fluid Biodegradable 46 | Bulk Pump off | On request |

100% RECYCLED PLASTIC PACKAGING - UNIQUE TO JCB.

JCB IS PROUD TO BE AT THE FOREFRONT OF THE DEVELOPMENT OF 100% RECYCLED PLASTIC 20L PAILS AND 5L CANS – AN INDUSTRY FIRST AND UNIQUE TO JCB.



- All JCB 20L and 5L oil packs are manufactured from 100% recycled plastic that would have otherwise gone to landfill
- The JCB pack contains all the benefits of a conventional plastic drum, however, it is manufactured from recycled plastic!
- Much of the recycled plastic has been sourced from plastic waste from automotive manufacture
- If correctly washed and cleansed the drum can be re-used again in oil and other applications
- Fully waterproof, it can be left outside in damp wet conditions
- Less than the 20kg manual handling limit when full
- Drum pump available which screws directly into the pack – part number: 990/89707





ENGINE OIL.

YOU CAN BE SURE OF THE PERFORMANCE AND CONFIDENT OF THE PROTECTION OFFERED BY JCB ENGINE OILS. THE HIGH QUALITY BASE OILS AND CAREFULLY SELECTED ADDITIVES ENSURE JCB ENGINE OILS EXCEED ALL INTERNATIONAL SPECIFICATIONS.

Engine oil testing

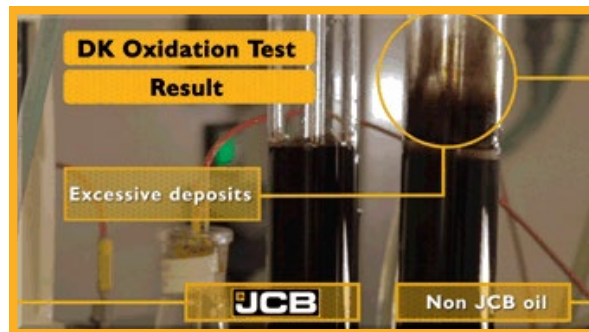
JCB engine oils undertake a rigorous programme of testing to ensure that they provide the maximum performance and protection for your JCB machine and its engine.

JCB Engineering standards lay down performance levels and criteria for JCB Engine oil which EXCEED OIL INDUSTRY STANDARDS. The DK Oxidation Test is a typical example of how JCB engine oil outperforms other engine oils that claim to be the same.

DK Oxidation test:

JCB Engine oil is blended to ensure that the oil continues to provide efficient lubrication throughout its designated service interval life. Some poor quality, low cost oils begin to breakdown leading to excessive deposits which cause reduced lubrication and subsequently increased wear.

The DK Oxidation test is an industry standard test and shows how oxidation can form within engine oil. The below is after 192 hours and shows excessive deposits forming with poor quality low cost engine oil, while there are no deposits from the JCB oil.



In this test the JCB product clearly outperformed both the low cost alternative and the industry standard requirement.



JCB ENGINE OIL UP 15W40

JCB UP 15W40 is aimed at Tier 4i/Stage IIIB and T4 Final Diesel engines that utilise DOC (Diesel oxidation catalyst), DPF (Diesel particulate filter) and SCR (Selective catalytic reduction) aftertreatment technology to meet emissions legislation.

JCB UP15W40 is an Ultra High Performance Diesel Engine Lubricant with Medium Sulphated Ash, Phosphorus and Sulphur content (Mid SAPS) and is also designed for the lubrication of the latest high performance USA EPA 2007 and EURO 5 diesel engines, in particular where these engines are equipped with after treatment systems (such as DOC, DPF & SCR) operating on low sulphur diesel fuel (50 ppm or below) and under severe heavy duty conditions.

BENEFITS

- A Tier 4i and Tier 4F engine oil.
- Specially developed formulation for ACEA E9 and API CJ-4 applications.
- Minimises diesel particulate filter (DPF/CRT) plugging.
- Protects catalytic after treatment systems (SCR).
- Excellent protection against bore polishing and cam wear.
- Provides quick lubrication after cold starting thus limiting engine wear.
- Prevents engine fouling due to combustion soot.

PERFORMANCE CLASSIFICATION

API CJ-4 / API SM. ACEA E9.

MANUFACTURERS' STANDARDS

Volvo VDS-4. Renault RLD-3. MB 228.31. MAN 3575. MAN 3275. MTU Type 2.1. Deutz DQC III-05. Cat ECF-3/ECF-2/ECF-1a. Mack EOM- Premium Plus. Cummins CES 20081. DDC 93K218.

| Description | Pack Size | Part Number |
|-------------------------|---------------|-------------|
| JCB Engine Oil UP 15W40 | 4x5L | 4001/2901 |
| JCB Engine Oil UP 15W40 | 20L | 4001/2905 |
| JCB Engine Oil UP 15W40 | 200L | 4001/2903 |
| JCB Engine Oil UP 15W40 | 1,000L - IBC | 4001/2945 |
| JCB Engine Oil UP 15W40 | Bulk Pump off | On request |



JCB ENGINE OIL UP 10W30

JCB Engine Oil UP 10W-30 is an Ultra High Performance Diesel Engine Lubricant with Medium Sulphated Ash, Phosphorus and Sulphur content (Mid SAPS) designed for the lubrication of the latest USA EPA 2007 and EURO 5 diesel engines.

It is a low viscosity SAE 10W-30 grade which offers fuel economy improvement.

JCB STANDARD:
4001/3000

BENEFITS

- A Tier 4i and Tier 4F engine oil.
- Specially developed formulation for ACEA E9 and API CJ-4 applications.
- Minimises diesel particulate filter (DPF/CRT) plugging.
- Protects catalytic after treatment systems (SCR).
- Excellent protection against bore polishing and cam wear.
- Provides quick lubrication after cold starting thus limiting engine wear.
- Prevents engine fouling due to combustion soot.

PERFORMANCE CLASSIFICATION

API CJ-4 / API SM / API CF. ACEA E9.

MANUFACTURERS' STANDARDS

Volvo VDS-4. Renault RLD-3. MB 228.31. MAN 3575. MAN 3275. MTU Type 2.1. Cat ECF-3/ECF-2. Cummins CES 20081. JASO DH-2.

| Description | Pack Size | Part Number |
|-------------------------|---------------|-------------|
| JCB Engine Oil UP 10W30 | 4x5L | 4001/3001 |
| JCB Engine Oil UP 10W30 | 20L | 4001/3005 |
| JCB Engine Oil UP 10W30 | 200L | 4001/3003 |
| JCB Engine Oil UP 10W30 | 1,000L - IBC | 4001/3045 |
| JCB Engine Oil UP 10W30 | Bulk Pump off | On request |



JCB ENGINE OIL UP 5W30

JCB UP 5W30 is a ultra high performance synthetic heavy duty engine oil with low sulphated ash, phosphorus and sulphur content (low SAPS) designed for lubrication of Euro IV, Euro V and Euro VI diesel engines giving excellent cold starting properties and fuel economy benefits.

This product is ideal for all Euro IV, Euro V and Euro VI diesel engines equipped with a diesel particulate filter (DPF) or catalytic after treatment systems (such as SCR) operating on low sulphur diesel fuel (50 ppm or below) and under severe heavy duty conditions. In addition it possesses excellent cold starting properties.

JCB STANDARD:
4001/3100

BENEFITS

- Product specially developed to cover ACEA E6, ACEA E7 and ACEA E9 applications.
- Provides enhanced durability reducing wear and corrosion.
- Low Viscosity SAE 5W-30 grade saves fuel consumption during warming-up phase and operating conditions.
- Minimises diesel particulate filter (DPF/CRT) plugging.
- Protects catalytic after treatment systems (SCR).
- Excellent cold starting properties due to low pour point.
- Excellent protection against bore polishing and cam wear.
- Provides quick lubrication after cold starting thus limiting engine wear.
- Prevents engine fouling due to combustion soot.

PERFORMANCE CLASSIFICATION

API CJ-4 / SN. ACEA E6, E7, E9.

MANUFACTURERS' STANDARDS

MB 228.31 / 228.51. MAN 3477. MTU Type 3.1. Volvo VDS-4 / CNG. Renault RXD / RLD-2 / RLD-3. Deutz DQC IV-10 LA. Mack EO-M Plus / EO-N Premium Plus. Mack EO-O Premium Plus. Cummins CES 20081. Caterpillar ECF-3. JASO DH-2.

| Description | Pack Size | Part Number |
|------------------------|---------------|-------------|
| JCB Engine Oil UP 5W30 | 4x5L | 4001/3101 |
| JCB Engine Oil UP 5W30 | 20L | 4001/3105 |
| JCB Engine Oil UP 5W30 | 200L | 4001/3103 |
| JCB Engine Oil UP 5W30 | 1,000L - IBC | 4001/3145 |
| JCB Engine Oil UP 5W30 | Bulk Pump off | On request |



JCB ENGINE OIL OP 15W40

JCB Optimum Performance Engine Oil 15W40 is a super high performance diesel engine lubricant designed for the lubrication of low emission Euro 4 engines and Euro 3 engines. It can be used in all high performance four stroke diesel engines operating on low sulphur diesel fuel (<0.05% mass) and under severe heavy duty conditions.

The diesel engines may be normally aspirated, turbocharged or supercharged, with or without intercooling and fitted in commercial vehicles or off-highway equipment. It is also suitable for application in passenger cars with petrol or diesel engines. This oil meets API CI-4 specification.

JCB STANDARD:
4001/2800

BENEFITS

- Product specially developed to cover ACEA E6, ACEA E7 and ACEA E9 applications.
- Provides enhanced durability reducing wear and corrosion.
- Low Viscosity SAE 5W-30 grade saves fuel consumption during warming-up phase and operating conditions.
- Minimises diesel particulate filter (DPF/CRT) plugging.
- Protects catalytic after treatment systems (SCR).
- Excellent cold starting properties due to low pour point.
- Excellent protection against bore polishing and cam wear.
- Provides quick lubrication after cold starting thus limiting engine wear.
- Prevents engine fouling due to combustion soot.

PERFORMANCE CLASSIFICATION

API CI-4 / SL. ACEA E7, E5, E3, B4, B3, A3.

MANUFACTURERS' STANDARDS

MAN M3275. MB 228.3. Volvo VDS-3. MTU Type 2. Mack EO-N. Cummins CES 20071, -72, -76, -77, World-wide DHD-1. Caterpillar ECF-1 & ECF-2. Renault VI RLD & RLD-2. ZF TE-ML 04C, 07C. Exceeds requirements of DAF, IVECO and Scania.

| Description | Pack Size | Part Number |
|-------------------------|---------------|-------------|
| JCB Engine Oil OP 15W40 | 4x5L | 4001/2801 |
| JCB Engine Oil OP 15W40 | 20L | 4001/2805 |
| JCB Engine Oil OP 15W40 | 200L | 4001/2803 |
| JCB Engine Oil OP 15W40 | 1,000L - IBC | 4001/2845 |
| JCB Engine Oil OP 15W40 | Bulk Pump off | On request |

ENGINE OIL.



JCB STANDARD:
4001/1800

JCB ENGINE OIL EP 15W40

An advanced, high specification engine oil, suitable for use in on and off highway and in commercial vehicle applications, including those meeting Euro 3 exhaust emission regulations.

Its outstanding protection for naturally aspirated, turbocharged and supercharged engines makes it the ideal choice for both single and mixed fleet operations.

BENEFITS

- Ideal for Tier 2 and Tier 3 JCB Dieselmex engines.
- An excellent value for money multi-purpose engine oil.
- Excellent protection against bore polishing and cam wear.
- Protects engine against corrosive wear in off-the-road applications.
- Provides quick lubrication after cold starting thus limiting engine wear.
- Prevents engine fouling due to combustion soot (problematic to EGR).
- Performance quality allows wide application from cars to trucks.
- Multi-purpose oil allows product range rationalisation.

PERFORMANCE CLASSIFICATION

API CH-4 / SJ. ACEA E5, E3, B3, A3.

MANUFACTURERS' STANDARDS

MAN M3275. MB 228.3. Volvo VDS-2. MTU Type 2. Mack EO-M Plus. Caterpillar ECF-1. Cummins CES 20071, -72, -76, -77. Recommended for Renault VI RLD. Exceeds requirements of DAF, IVECO and Scania.

| Description | Pack Size | Part Number |
|-------------------------|---------------|-------------|
| JCB Engine Oil EP 15W40 | 4x5L | 4001/1801 |
| JCB Engine Oil EP 15W40 | 20L | 4001/1805 |
| JCB Engine Oil EP 15W40 | 200L | 4001/1803 |
| JCB Engine Oil EP 15W40 | 1,000L - IBC | 4001/1845 |
| JCB Engine Oil EP 15W40 | Bulk Pump off | 4001/1815 |



JCB STANDARD:
4001/2700

JCB ENGINE OIL EP 5W40

JCB Engine Oil EP 5W40 has been specifically introduced to offer the most cost effective, extreme performance engine oil possible for JCB Ecomax T4i engine. It also provides cold climate protection for the Dieselmex T3 engine where required.

This product is an extreme performance synthetic diesel engine lubricant which is specially formulated to offer superior cold start properties. With a pour point of -30°C it is an ideal choice for off-highway equipment operating in low temperature conditions below -10°C. In addition it offers protection against corrosion and rust and the increased wear found in cold start conditions.

BENEFITS

- **Designed and produced specifically for the JCB Ecomax T3 & T4i engines.**
- Synthetic Extreme Performance engine lubricant offers superior cold start properties.
- Superior turbocharger lubrication and protection.
- Synthetic formulation offering improved engine cleanliness.
- Protects against cam wear.
- Provides good lubrication after cold starting thus limiting engine wear.
- Prohibits corrosion and helps protect against rust.
- Reduces handling and storage costs (one oil for many applications).

PERFORMANCE CLASSIFICATION

API CH-4 / CG-4 / CF-4 / CF / SJ. ACEA E2, B3, A3.

MANUFACTURERS' STANDARDS

JCB Standard: 4001/2700. Designed and produced specifically for the JCB Ecomax T3 & T4i engines.

| Description | Pack Size | Part Number |
|------------------------|---------------|-------------|
| JCB Engine Oil EP 5W40 | 4x5L | 4001/2701 |
| JCB Engine Oil EP 5W40 | 20L | 4001/2705 |
| JCB Engine Oil EP 5W40 | 200L | 4001/2703 |
| JCB Engine Oil EP 5W40 | 1,000L - IBC | 4001/2745 |
| JCB Engine Oil EP 5W40 | Bulk Pump off | 4001/2715 |



JCB STANDARD:
4001/1500

JCB ENGINE OIL HP 15W40

JCB HP 15W40 is a universal mixed fleet engine lubricant and is used in high performance four stroke diesel engines, normally aspirated as well as turbocharged or supercharged, operating under moderate to heavy duty condition.

JCB HP 15W40 is used as engine lubricant in off highway/ construction applications, commercial vehicles, buses or military equipment, when one or more of the following specifications below are used to describe the required lubricant quality.

BENEFITS

- An excellent value for money multi-purpose engine oil.
- Ideal universal mixed fleet engine lubricant.
- Universal engine/transmission lubricants for buses and off-highway or military equipment.
- Reduces handling and storage costs (one oil for many applications).
- Helps protect against cam wear.
- Provides good lubrication after cold starting thus limiting engine wear.
- Prohibits corrosion and helps protect against rust.

PERFORMANCE CLASSIFICATION

API CF-4 / CF / SG. ACEA A2, B2, E2.

MANUFACTURERS' STANDARDS

MIL-L-46152E. MIL-L-2104E. MAN 271 (diesel engines, normal drain). Mercedes-Benz page 228.1 and 229.1 (diesel and gasoline engines). Volkswagen TL-VW 501.01, 505.00. Volvo VDS (Diesel engines). Scania Diesel engines. RVI SHPD (Heavy Duty Diesel Engines) E2-R. Ford ESE-M2C153-E (service fill SG/CD). General Motors GM 6094M (service fill SG/CD). Allison C-4 (automatic transmissions). Caterpillar TO-2 (transmissions). Voith selected transmissions. ZF TE-ML 04C, 07.

| Description | Pack Size | Part Number |
|-------------------------|---------------|-------------|
| JCB Engine Oil HP 15W40 | 4x5L | 4001/1501 |
| JCB Engine Oil HP 15W40 | 20L | 4001/1505 |
| JCB Engine Oil HP 15W40 | 200L | 4001/1503 |
| JCB Engine Oil HP 15W40 | 1,000L - IBC | 4001/1545 |
| JCB Engine Oil HP 15W40 | Bulk Pump off | 4001/1515 |



JCB STANDARD:
4001/1700

JCB ENGINE OIL HP 10W30

JCB HP 10W30 is a universal mixed fleet engine lubricant and is used in high performance four stroke diesel engines, normally aspirated as well as turbocharged or supercharged, operating under moderate to heavy duty condition.

JCB HP 10W30 is used as engine lubricant in off highway/ construction applications, commercial vehicles, buses or military equipment, when one or more of the following specifications below are used to describe the required lubricant quality.

BENEFITS

- An excellent value for money multi-purpose engine oil.
- Ideal universal mixed fleet engine lubricant.
- Universal engine/transmission lubricant for buses and off-highway or military equipment.
- Reduces handling and storage costs (one oil for many applications).
- Helps protect against cam wear.
- Provides superior lubrication after cold starting thus limiting engine wear.
- Prohibits corrosion and helps protect against rust.

PERFORMANCE CLASSIFICATION

API CH-4 / CG-4 / SJ / CF. ACEA A2, B2, E2.

MANUFACTURERS' STANDARDS

Mack EO-L Plus. Cummins CES 20076. Cat ECF-1.

| Description | Pack Size | Part Number |
|-------------------------|---------------|-------------|
| JCB Engine Oil HP 10W30 | 4x5L | 4001/1701 |
| JCB Engine Oil HP 10W30 | 20L | 4001/1705 |
| JCB Engine Oil HP 10W30 | 200L | 4001/1703 |
| JCB Engine Oil HP 10W30 | 1,000L - IBC | 4001/1745 |
| JCB Engine Oil HP 10W30 | Bulk Pump off | On request |



JCB STANDARD:
4001/1900

JCB ENGINE OIL HP 20W50

JCB HP 20W50 is a universal mixed fleet engine lubricant and is used in high performance four stroke diesel engines, normally aspirated as well as turbocharged or supercharged, operating under moderate to heavy duty condition.

JCB HP 20W50 is used as engine lubricant in off highway/ construction applications, commercial vehicles, buses or military equipment, when one or more of the following specifications below are used to describe the required lubricant quality.

BENEFITS

- An excellent value for money multi-purpose engine oil.
- Ideal universal mixed fleet engine lubricant.
- Universal engine/transmission lubricants for buses and off-highway or military equipment.
- Reduces handling and storage costs (one oil for many applications).
- Helps protect against cam wear.
- Provides good lubrication after cold starting thus limiting engine wear.
- Prohibits corrosion and Protects against rust.

PERFORMANCE CLASSIFICATION

API CF-4 / CF / SG. ACEA A2, B2, E2.

MANUFACTURERS' STANDARDS

MIL-L-46152C. MIL-L-2104C. CCMC G2, PDI, D2. MAN 270 (diesel engines, normal drain). Mercedes-Benz page 227.0 (diesel engine, normal drain). ZF TE-ML 03 (converter transmissions in mobile equipment. Allison C-3 (automatic transmissions). Caterpillar TO-2 (transmissions). Clark Form TLC-25 3M 8-83 (power shifted transmissions, torque converters). DANA Spicer Bulletin 2508-9 (mechanical transmissions, auxiliaries, transfer cases). Eaton/Fuller Bulletin 2052 (twin countershaft transmissions). Voith (retarder).

| Description | Pack Size | Part Number |
|-------------------------|-----------|-------------|
| JCB Engine Oil HP 20W50 | 20L | 4001/1905 |
| JCB Engine Oil HP 20W50 | 200L | 4001/1903 |



JCB STANDARD:
4001/0300

JCB ENGINE OIL HP SAE30

A versatile, high performance engine oil for diesel engines in commercial vehicles and plant operating under moderate and heavy conditions, where a monograde oil is prescribed or preferred. JCB Engine Oil HP SAE 30 can also be used as a gear, transmission or hydraulic lubricant. Its excellent anti-sludge and detergent/dispersant properties keep the engine clean and deposit free.

BENEFITS

- An excellent value for money multi-purpose engine oil.
- Good anti-wear performance in both engine and transmissions.
- Excellent detergent/dispersant gives freedom from deposits and sludge.
- Ideal universal mixed fleet engine lubricant.
- Reduces handling and storage costs and avoids use of wrong oil (one oil for many applications).
- Helps protect against cam wear.
- Helps prevent corrosion and rust.

PERFORMANCE CLASSIFICATION

API CD / SF / CDII.

MANUFACTURERS' STANDARDS

MIL-L-46152E. MIL-L-2104E. MAN 271 (diesel engines, normal drain). Mercedes-Benz page 228.1 and 229.1 (diesel and gasoline engines). Volkswagen TL-VW 501.01, 505.00. Volvo VDS (diesel engines). Scania Diesel engines. Ford ESE-M2C153-E (service fill SG/CD). RVI SHPD (Heavy Duty Diesel Engines) E2-R. General Motors GM 6094M (service fill SG/CD). Allison C-4 (automatic transmissions). Caterpillar TO-2 (transmissions). Voith selected transmissions. ZF TE-ML 04C, 07.

| Description | Pack Size | Part Number |
|-------------------------|-----------|-------------|
| JCB Engine Oil HP SAE30 | 4x5L | 4001/0302 |
| JCB Engine Oil HP SAE30 | 20L | 4001/0305 |
| JCB Engine Oil HP SAE30 | 200L | 4001/0301 |

ENGINE OIL.



JCB STANDARD:
4001/3300

JCB ENGINE OIL FE 5W30

Able to operate down to -30 degrees centigrade JCB recommended this engine oil for extreme cold climatic conditions.

In addition this fuel saving heavy duty diesel engine oil is specially recommended for high performance Euro 4/5 diesel engines. JCB FE 5W30 can also be used in other HD diesel engines of commercial vehicles and off-highway equipment which are normally aspirated, turbocharged or supercharged. This oil can also be applied in retarders.

NB: Not recommended for either gasoline engines or diesel engines requiring low ash products.

BENEFITS

- Superb protection against bore polishing.
- Provides excellent engine cleanliness.
- Can offer reduced fuel consumption.
- Avoids the deposition of sludge due to combustion soot.
- Protects against cylinder and cam wear.
- Provides quick lubrication after cold starting thus limiting engine wear.
- Reduces downtime and maintenance and fuel costs.
- Prohibits rust, corrosion and excessive foaming.

PERFORMANCE CLASSIFICATION

ACEA E4, E7.

MANUFACTURERS' STANDARDS

MB 228.5. MAN M 3277. Volvo VDS-3. Scania LDF. Renault RXD. DAF HPI, HP2. MTU Type 3. Mack EO-M Plus. Cummins CES 20077, -76, 72, -71. Voith Oil Class B. MB 235.28 (retarder).

| Description | Pack Size | Part Number |
|------------------------|---------------|-------------|
| JCB Engine Oil FE 5W30 | 4x5L | 4001/3301 |
| JCB Engine Oil FE 5W30 | 20L | 4001/3305 |
| JCB Engine Oil FE 5W30 | 200L | 4001/3303 |
| JCB Engine Oil FE 5W30 | 1,000L - IBC | 4001/3345 |
| JCB Engine Oil FE 5W30 | Bulk Pump off | On request |



JCB STANDARD:
4004/0300

JCB UNIVERSAL AGRICULTURAL OIL

A truly multipurpose oil which is suitable for naturally aspirated, turbocharged engines, transmissions (including wet brake systems) and hydraulics.

JCB Universal Agricultural Oil can also be used in power steering and power take-offs where an engine oil is specified. This SAE 10W30 viscosity product has good fluidity, ensuring easy starting and rapid hydraulic response even in the most severe weather conditions.

BENEFITS

- Truly universal application oil.
- Suitable for engines, transmissions and hydraulic systems.
- Excellent fluidity, ensuring easy starting and rapid hydraulic response.
- Rationalisation reduces storage and handling costs and eliminates risk of incorrect application.
- Excellent wear rate protection extends engine and component life.
- Can be used for power steering and PTOs where an engine oil is specified.

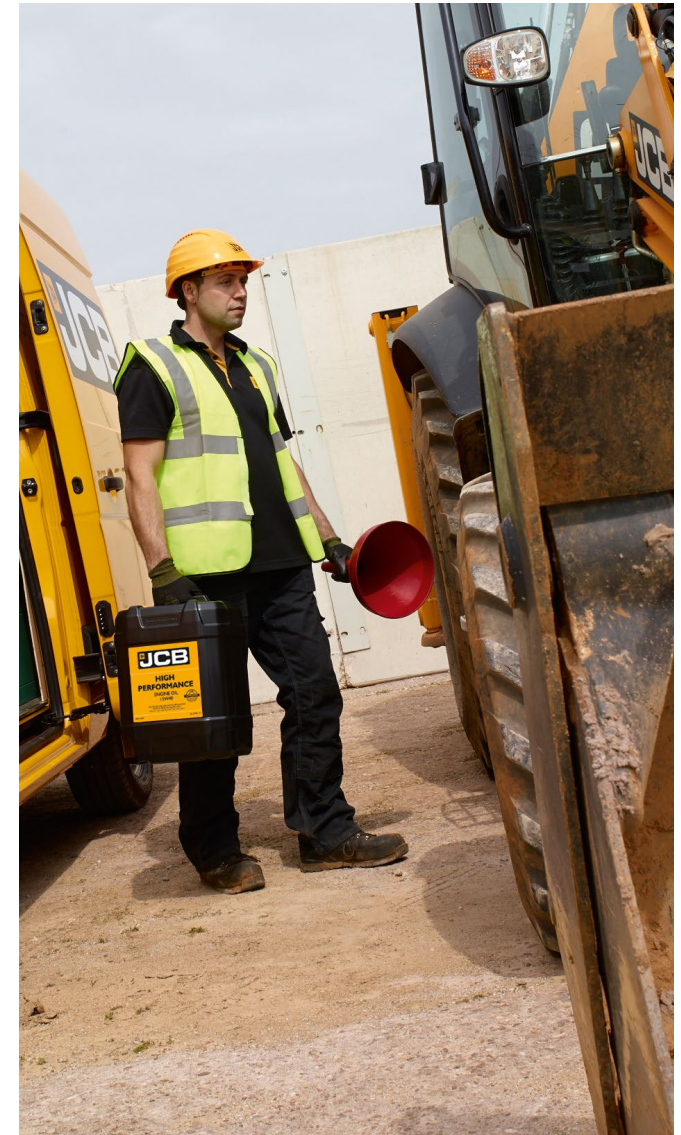
PERFORMANCE CLASSIFICATION

API CF-4 / SF. API GL-4.

MANUFACTURERS' STANDARDS

Case MS 1118 MS 1209. Ford ESN-M2C-41-B, -121-E, -134-C, -159-C. Massey Ferguson CMS M1127, 1135, 1139, 1141, 1144. Caterpillar TO-2. Allison C-4. New Holland NH 024C, 324B, 410B. ZF TE-ML 06 B, 07 B.

| Description | Pack Size | Part Number |
|--------------------------------|---------------|-------------|
| JCB Universal Agricultural Oil | 20L | 4004/0305 |
| JCB Universal Agricultural Oil | 200L | 4004/0302 |
| JCB Universal Agricultural Oil | 1,000L - IBC | 4004/0345 |
| JCB Universal Agricultural Oil | Bulk Pump off | 4004/0315 |



JCB MACHINE ENGINE OIL SPECIFICATION BY EMISSIONS LEVEL, ENGINE RATING AND TEMPERATURE RANGE.

| | | | Ambient Temperature (°C) | | | | | | | 20L Part No. |
|---------------------|-------------------------------|--------------------------|--|-----|-----|---|-----|-----|-----|--------------|
| | Emissions Level | Engine Rating | -30 | -20 | -15 | 0 | +30 | +40 | +46 | |
| JCB Dieselmax | Tier 2 & Tier 3 | All | 15W40 4001/1800 API Spec: CH-4 | | | | | | | 4001/1805 |
| | | | 5W40 4001/2700 API Spec: CH-4 | | | | | | | 4001/2705 |
| JCB Ecomax | Tier 4 Interim | All | 5W40 4001/2700 API Spec: CH-4 | | | | | | | 4001/2705 |
| | Tier 4 Final | 55kW (No aftertreatment) | 5W40 4001/3400 API Spec: CJ-4 (North America Only) | | | | | | | 4001/3405 |
| | | 68kW + | 5W30 4001/3100 API Spec: CJ-4 | | | | | | | 4001/3105 |
| | | | 10W30 4001/3000 API Spec: CJ-4 | | | | | | | 4001/3005 |
| Isuzu | Tier 2 & Tier 3 | All | 15W40 4001/1800 API Spec: CH-4 | | | | | | | 4001/1805 |
| | | | 10W30 4001/1700 API Spec: CH-4 | | | | | | | 4001/1705 |
| | Tier 4 Interim & Tier 4 Final | All | 15W40 4001/2900 API Spec: CJ-4 | | | | | | | 4001/2905 |
| | | | 10W30 4001/3000 API Spec: CJ-4 | | | | | | | 4001/3005 |
| Cummins | Tier 2 & Tier 3 | All | 5W40 4001/2700 API Spec: CH-4 | | | | | | | 4001/2705 |
| | | | 15W40 4001/1800 API Spec: CH-4 | | | | | | | 4001/1805 |
| | | | 10W30 4001/1700 API Spec: CH-4 | | | | | | | 4001/1705 |
| | Tier 4 Interim & Tier 4 Final | All | 10W30 4001/3000 API Spec: CJ-4 | | | | | | | 4001/3005 |
| | | | 15W40 4001/2900 API Spec: CJ-4 | | | | | | | 4001/2905 |
| Kohler / Lombardini | Tier 2 & Tier 3 | All | 5W40 4001/2700 API Spec: CH-4 | | | | | | | 4001/2705 |
| | Tier 4 Interim & Tier 4 Final | All | 10W30 4001/3000 API Spec: CJ-4 | | | | | | | 4001/3005 |
| | | | 5W30 4001/3100 API Spec: CJ-4 | | | | | | | 4001/3105 |
| Sisu | All | All | 15W40 4001/2900 API Spec: CJ-4 | | | | | | | 4001/2905 |
| | | | 10W30 4001/3000 API Spec: CJ-4 | | | | | | | 4001/3005 |
| MTU | All | All | 15W40 4001/2900 API Spec: CJ-4 | | | | | | | 4001/2905 |
| | | | 10W30 4001/3000 API Spec: CJ-4 | | | | | | | 4001/3005 |
| Perkins | Tier 2 & Tier 3 | All | 5W40 4001/2700 API Spec: CH-4 | | | | | | | 4001/2705 |
| | | | 15W40 4001/1800 API Spec: CH-4 | | | | | | | 4001/1805 |

Check Operator Handbook/Manual for full details. 02/15.

GEAR OIL.

GENUINE JCB GEAR OILS OFFER IMPROVED PERFORMANCE AND HIGH LEVELS OF WEAR PROTECTION. THEY ARE SUITABLE FOR A WIDE RANGE OF APPLICATIONS.

Gear and Transmission oil testing

JCB gear and transmission oils undertake a rigorous programme of testing to ensure that they provide the maximum performance and protection for your JCB machine and its gear and transmission systems.

JCB Engineering standards lay down performance levels and criteria for JCB Gear and Transmission oil which EXCEED OIL INDUSTRY STANDARDS. The Copper Strip Test is just an example of how JCB Gear and Transmission oils outperform other gear and transmission fluids that claim to be the same.

Copper strip test:

The presence of water within oil can cause corrosion, subsequent premature wear and tear or even failure of gears and transmissions.

An industry standard test is the copper strip test to identify the presence of water within oil. While some water presence is allowed, as you can see from the discolouring on the copper strip below, poor quality low cost oils will accept a greater presence of water than JCB oils.



Choosing anything else but the approved JCB oil is a false economy which can lead to inefficient machine operation, component wear and ultimately premature component failure.

In this test the JCB product clearly outperformed the low cost alternative.



**JCB STANDARD:
4000/3700**

JCB GEAR OIL OP

JCB Optimum Performance Gear Oil has been specially developed as a universal gear oil to satisfy both the drum and gear lubrication requirements of the JCB Vibromax range of machines.

BENEFITS

- Fully synthetic yet also compatible with mineral oil products.
- Energy saving characteristics through friction reduction.
- Outstanding low temperature start ability.
- Reduced wear under boundary lubrication conditions.
- JCB OP Gear oil exceeds current standards for gear lubricants, and provides highest obtainable performance in the grey staining test.
- JCB OP Gear oil is approved by Jahnel-Kestermann for industrial gear and windturbine gear applications.
- JCB OP Gear oil is approved by Rexroth Bosch Group (Lohmann & Stoltherfoht).

PERFORMANCE CLASSIFICATION

DIN 51517. CATEGORY CLP (1989).

MANUFACTURERS' STANDARDS

ISO 12925-I. Type CKC-CKD. AGMA 9005-D94 (5EP, 6EP & 7EP).
Jahnel-Kestermann Getriebewerke GmbH & Co. KG.

| Description | Pack Size | Part Number |
|-----------------|---------------|-------------|
| JCB Gear Oil OP | 4x5L | 4000/3701 |
| JCB Gear Oil OP | 20L | 4000/3705 |
| JCB Gear Oil OP | 200L | 4000/3703 |
| JCB Gear Oil OP | 1,000L - IBC | 4000/3745 |
| JCB Gear Oil OP | Bulk Pump off | On request |



JCB GEAR OIL EP 80W90

A heavy duty multigrade gear lubricant, suitable for use in gearboxes and final drives where special anti-wear protection is required. The high quality additive package and unique base oils protect against rust and corrosion, extending component life. This oil is particularly suited for hypoid and spiral bevel type gears in commercial vehicles, off-highway equipment and passenger cars operating in moderate to heavy conditions.

JCB STANDARD:
4004/5100

BENEFITS

- Extends drive-train component life.
- Excellent protection against wear and scoring even under heavy duty conditions.
- Formulated to prevent oil breakdown.
- Protects against rust and corrosion.
- Very shear stable formulation.
- Proven oxidation stability.
- Compatible with most seal materials.

PERFORMANCE CLASSIFICATION

API GL-5, MIL-L-2105D (MULTI- GRADES), BRITISH MINISTRY OF DEFENCE CS 3000B.

MANUFACTURERS' STANDARDS

JI Case MS 1316. Clark MS-8 Rev.1. Clark Form No. ALC-I 5M 7-80 KE. TLC-25 3M 8-83. John Deere JDM J11D/E. Eaton Bulletin 2053, 6007. Eaton/Fuller Bulletin 2052. Ford SM-2C-1011A SQM- 2C9002-AA. Fuller Form 121. General Motors Pt. no. 88 63 370, 85 476. Komatsu Dresser B22-0003, B22-0005. MAN 342. Mercedes-Benz page 235.0. Rockwell International 0-76. VME Americas EEMS 19003F. Volvo 97310. ZF TE-ML 01. ZF TE-ML 05. ZF TE-ML 07. ZF TE-ML 12A.

| Description | Pack Size | Part Number |
|-----------------------|-----------|-------------|
| JCB Gear Oil EP 80W90 | 1L | 4004/5104 |
| JCB Gear Oil EP 80W90 | 20L | 4004/5105 |
| JCB Gear Oil EP 80W90 | 200L | 4004/5103 |



JCB GEAR OIL EP 85W140

A heavy duty multigrade gear lubricant, suitable for use in gearboxes and final drives, where special anti-wear protection is required. The high quality additive package and unique base oils protect against rust and corrosion, extending component life. Particularly suited for hypoid and spiral bevel type gears in commercial vehicles, off-highway equipment and passenger cars operating in moderate to heavy conditions.

JCB STANDARD:
4000/0600

BENEFITS

- Protects against rust and corrosion.
- Very shear stable formulation.
- Proven oxidation stability.
- Compatible with seal materials.
- Extends drive-train component life.
- Good protection against wear and scoring even under heavy duty and shock loading conditions.
- High resistance to thermal and chemical degradation.

PERFORMANCE CLASSIFICATION

API GL-5.

MANUFACTURERS' STANDARDS

MIL-L-2105D. British Ministry of Defence CS 3000B. JI Case MS 1316. Clark MS-8 Rev.1 (axles). Clark Form No. ALC-I 5M 7-80 KE. TLC-25 3M 8-83. John Deere JDM J11D/E. Eaton Bulletin 2053, 6007. Eaton/Fuller Bulletin 2052. Ford SM-2C-1011-A, SQM-2C-9002-AA. Fuller Form 121. General Motors Pt. no. 88 63 370, 85 476. Komatsu Dresser B22-0003, B22-0005. MAN 342. Mercedes-Benz page 235.0. Rockwell International 0-76. VME Americas EEMS 19003F. Volvo 97310, 97316. ZF TE-ML 05A, 07A, 12A, 16B/C/D, 17B, 19B, 21A.

| Description | Pack Size | Part Number |
|------------------------|---------------|-------------|
| JCB Gear Oil EP 85W140 | 20L | 4000/0605 |
| JCB Gear Oil EP 85W140 | 200L | 4000/0603 |
| JCB Gear Oil EP 85W140 | 1,000L - IBC | 4000/0645 |
| JCB Gear Oil EP 85W140 | Bulk Pump off | 4000/0615 |



JCB GEAR OIL LS PLUS

An SAE 80W90 multipurpose limited slip gear oil designed for use in hypoid gears, axles and final drives. It is especially suited for those with wet brake plates and limited slip (LS) differentials. This oil also offers reduced 'Brake Chatter' and improved mechanical transmission component life along with excellent extreme pressure protection. JCB Gear Oil LS Plus can be used for both on and off-highway equipment.

JCB STANDARD:
4000/3900

BENEFITS

- GL-5 gear oil performance in combination with wet brake and limited slip differential capabilities offering excellent wear protection.
- Excellent dynamic braking performance for smooth and safe brake operation.
- Significant reduction in brake chatter improving mechanical transmission component life.
- Excellent extreme pressure protection.
- Can be used in on LSD applications.
- Compatible with seal materials.

PERFORMANCE CLASSIFICATION

API GL-5.

MANUFACTURERS' STANDARDS

JDQ-96 (JD J20C).

| Description | Pack Size | Part Number |
|----------------------|---------------|-------------|
| JCB Gear Oil LS Plus | 4x5L | 4000/3901 |
| JCB Gear Oil LS Plus | 20L | 4000/3905 |
| JCB Gear Oil LS Plus | 200L | 4000/3903 |
| JCB Gear Oil LS Plus | 1,000L - IBC | 4000/3945 |
| JCB Gear Oil LS Plus | Bulk Pump off | On request |

GEAR OIL.



JCB GEAR OIL HP

A highly refined paraffinic mineral oil, containing extreme pressure additives and friction modifiers, suitable for a wide range of applications including: axles, oil-immersed brakes, clutches, transmissions and hydraulics.

JCB STANDARD:
4000/0500

BENEFITS

- Provides excellent drive-line lubrication.
- Optimal friction characteristics for wet brakes.
- Avoids IPTO clutch slippage and reduces wet brake noise.
- Suitable for tractor hydraulic systems.
- Excellent viscosity stability between services.
- Provides good transmission lubrication.
- Prevents equipment component corrosion.
- Contains effective anti-foam agent.

PERFORMANCE CLASSIFICATION

API GL-4.

MANUFACTURERS' STANDARDS

Case MS 1209 (Hy-Tran Plus, transmissions, hydraulics, wet brakes). Case UK/David Brown. John Deere JDM J20C. Fiat AF 87. Ford New Holland. ESEN-M2C86-B. Komatsu Dresser B06-0002. Landini UTTO. Massey Ferguson CMS M 1127, 1135, 1141. SAME UTTO (past 1981 models). Valmet/Volvo BM UTTO (transmissions, hydraulics). Allison C-3 (automatic transmissions). Caterpillar TO-2 (transmissions).

| Description | Pack Size | Part Number |
|-----------------|-----------|-------------|
| JCB Gear Oil HP | 20L | 4000/0505 |
| JCB Gear Oil HP | 200L | 4000/0503 |



JCB GEAR OIL HP PLUS

A high performance gear oil specifically developed for the JCB axle and transmission, no other product will provide the chatter control and brake performance in the JCB manufactured powertrain that JCB Gear Oil plus will. Its unique enhanced viscosity stability provides consistent protection throughout its prescribed service interval. In addition to ensuring excellent wear resistance for valves, pumps and gears, its unique JCB formulation offers outstanding squawk and chatter control in oil immersed brake systems.

JCB STANDARD:
4000/2200

BENEFITS

- JCB Gear Oil HP Plus has been designed and developed specifically to provide optimum performance of the wet brake mechanism incorporated into the axle/transmission systems manufactured by JCB.
- Provides excellent chatter control, preventing brake noise in JCB axles.
- Provides smooth gear-changing, even in manual transmissions.
- Maintains braking efficiency in wet brake systems, with reduction in noise and friction plate wear.
- Extends equipment life by protecting against rust and corrosion.
- Contains rust and corrosion inhibitors.
- Contains a very effective anti-foam agent.
- Compatible with all conventional seal materials.

PERFORMANCE CLASSIFICATION

JCB STANDARD: 4000/2200.

MANUFACTURERS' STANDARDS

JCB Standard 400/2200 unique to JCB.

| Description | Pack Size | Part Number |
|----------------------|---------------|-------------|
| JCB Gear Oil HP Plus | 4x5L | 4000/2202 |
| JCB Gear Oil HP Plus | 20L | 4000/2205 |
| JCB Gear Oil HP Plus | 200L | 4000/2203 |
| JCB Gear Oil HP Plus | 1,000L - IBC | 4000/2245 |
| JCB Gear Oil HP Plus | Bulk Pump off | 4000/2215 |



JCB GEAR OIL HP 90

A heavy duty multipurpose gear oil, formulated for gear type transmissions, spiral bevelled and hypoid drive axles, operating within a very wide oil temperature range (up to 150°C) and worm gear final drives (up to 100°C). It contains extreme pressure additives to give high level wear protection under high speed, high torque and shock loading conditions.

JCB STANDARD:
4000/0300

BENEFITS

- Extends drive-train component life.
- Good protection against wear and scoring even under heavy duty and shock loading conditions.
- High resistance to thermal and chemical degradation during use.
- Protects against rust and corrosion.
- Very shear stable formulation.
- Proven oxidation stability.
- Compatible with seal materials.

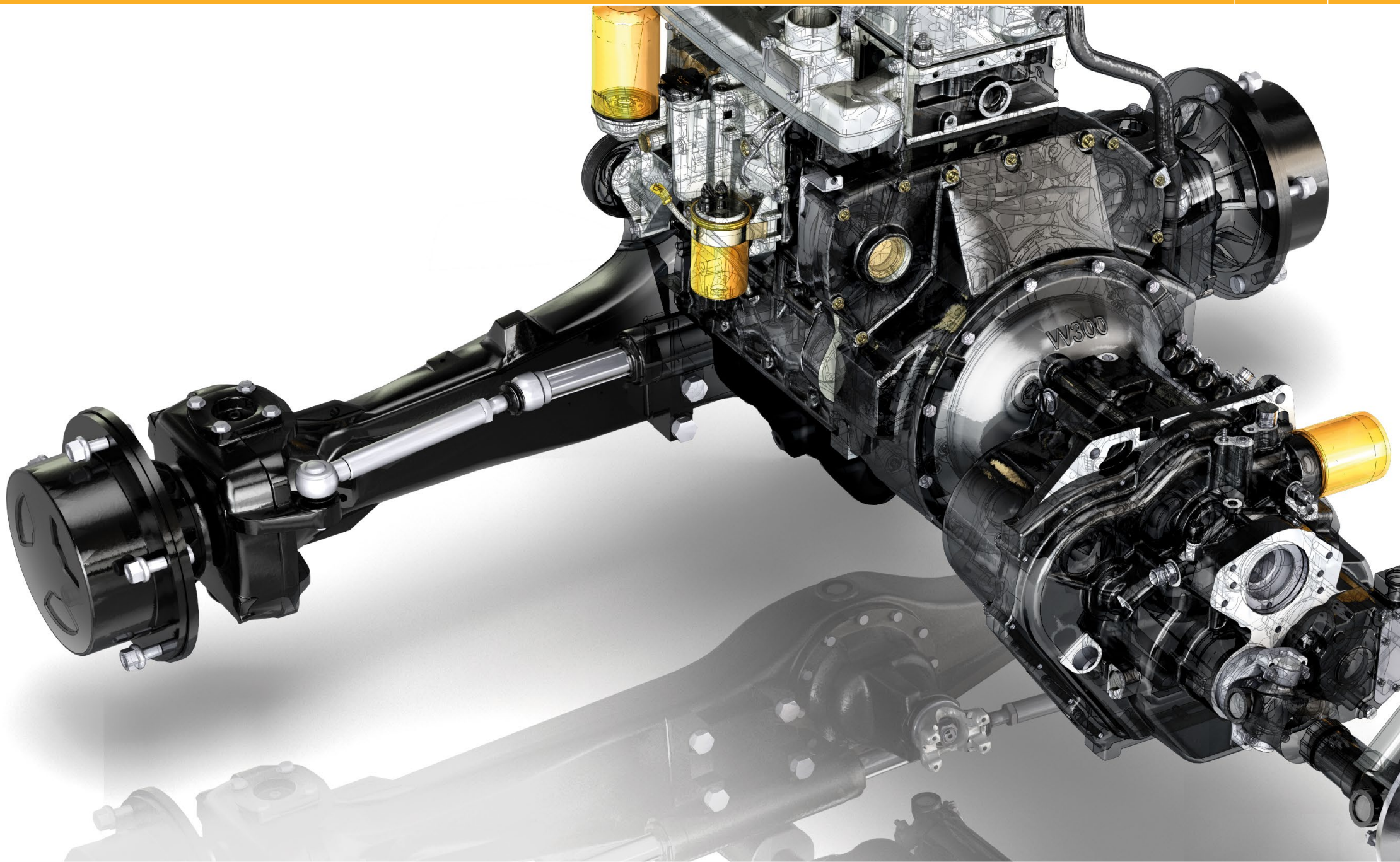
PERFORMANCE CLASSIFICATION

API GL-5. MIL-L-2105B (MONOGRADES). BRITISH MINISTRY OF DEFENCE CS 3000B.

MANUFACTURERS' STANDARDS

Jl Case MS 1316. Clark MS-8 Rev.1. Clark Form No. ALC-1 5M 7-80 KE, TLC-25 3M 8-83. John Deere JDM J11D/E. Eaton Bulletin 2053, 6007. Eaton/Fuller Bulletin 2052. Ford SM-2C-1011A SQM-2C9002-AA. Fuller Form 121. General Motors Pt. no. 88 63 370, 85 476. Komatsu Dresser B22-0003, B22-0005. MAN 342. Mercedes-Benz page 235.0. Rockwell International 0-76. VME Americas EEMS 19003F. Volvo 97310. ZF TE-ML 01. ZF TE-ML 05. ZF TE-ML 07. ZF TE-ML 12A.

| Description | Pack Size | Part Number |
|--------------------|---------------|-------------|
| JCB Gear Oil HP 90 | 4x5L | 4000/0301 |
| JCB Gear Oil HP 90 | 20L | 4000/0305 |
| JCB Gear Oil HP 90 | 200L | 4000/0303 |
| JCB Gear Oil HP 90 | 1,000L - IBC | 4000/0345 |
| JCB Gear Oil HP 90 | Bulk Pump off | 4000/0315 |



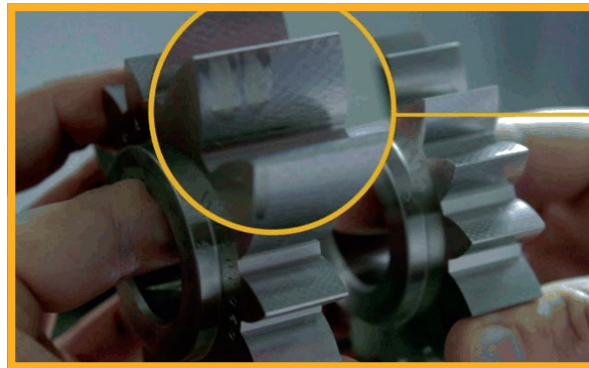
TRANSMISSION FLUIDS.

GENUINE JCB HIGH QUALITY TRANSMISSION FLUIDS GIVE HIGH LEVEL OF WEAR PROTECTION AND ARE SUITABLE FOR A WIDE RANGE OF APPLICATIONS.

Gear and Transmission oil testing

JCB gear and transmission oils undertake a rigorous programme of testing to ensure that they provide the maximum performance and protection for your JCB machine and its gear and transmission systems.

JCB Engineering standards lay down performance levels and criteria for JCB Gear and Transmission oil which EXCEED OIL INDUSTRY STANDARDS. Below is just an example of how wear and tear caused by poor quality oil can manifest itself.



In tests the JCB product clearly outperformed the lower cost alternatives.

Choosing anything else but the approved JCB oil is a false economy which can lead to inefficient machine operation, component wear and ultimately premature component failure.



**JCB STANDARD:
4004/6300**

JCB TRANSMISSION FLUID OP

A high quality transmission fluid uniquely designed for use on JCB Fastrac machines fitted with V-Tronic transmissions. Its universal properties make it suitable for use in engines, wet brake systems, final drives and hydraulic systems.

BENEFITS

- Suitable for diesel and gasoline engines fitted in tractors and off-highway/construction equipment.
- Avoids IPTO (independent power take off) clutch slippage.
- Limits wet brake noise, thus maintains brake capacity while limiting friction plate wear.
- Provides good transmission lubrication.
- Help prevent equipment component rust and corrosion.
- Low viscosity grade will provide quick response.

PERFORMANCE CLASSIFICATION

API CE / SF. API CF. API CG-4. ACEA E3. API GL-3 / GL-4.

MANUFACTURERS' STANDARDS

JCB FASTRAC (CVT). ZF TE-ML 06B, 06C. MB 227.1. AGCO CVT ML 200. Allison C4 (automatic transmissions). Massey Ferguson CMS M 1135, M 1139, M 1143, M 1144, M 1145. John Deere J20C & J27. Ford M2C134D, Ford M2C159B & M2C159C (Super Tractor Oil Universal). New Holland NH 030C, NH 024C, NH 410B & NH 420A. CNH MAT 3525, 3526.

| Description | Pack Size | Part Number |
|---------------------------|-----------|-------------|
| JCB Transmission Fluid OP | 20L | 4004/6305 |



JCB TRANSMISSION FLUID EP 10W

A high quality transmission lubricant recommended for off-highway, construction and agricultural equipment. Its primary use is in powershift transmissions, final drives, hydrostatic transmissions, torque converters and hydraulic systems.

JCB STANDARD:
4000/2500

BENEFITS

- An excellent multi-purpose transmission fluid.
- Optimal friction characteristics even at low temperatures.
- Provides good wear protection also under heavy duty conditions.
- Gear protection, even under shock load conditions.
- Extends drive line component life.
- Protects against rust and prevents corrosion.
- Provides good transmission lubrication.

PERFORMANCE CLASSIFICATION

CATERPILLAR TO-4. ALLISON C-4.

MANUFACTURERS' STANDARDS

ZF TE-ML 03C. Komatsu Micro-Clutch. Eaton /Fuller (certain manual transmissions, see operating manual). DANA (certain manual transmissions, see operating manual).

| Description | Pack Size | Part Number |
|-------------------------------|---------------|-------------|
| JCB Transmission Fluid EP 10W | 4x5L | 4000/2501 |
| JCB Transmission Fluid EP 10W | 20L | 4000/2505 |
| JCB Transmission Fluid EP 10W | 200L | 4000/2503 |
| JCB Transmission Fluid EP 10W | 1,000L - IBC | 4000/2545 |
| JCB Transmission Fluid EP 10W | Bulk Pump off | 4000/2515 |



JCB TRANSMISSION FLUID EP SAE 30

A high quality transmission lubricant recommended for off- highway, construction and agricultural equipment. Its primary use is in powershift transmissions, final drives, hydrostatic transmissions, torque converters and hydraulic systems.

JCB STANDARD:
4000/2600

BENEFITS

- An excellent multi-purpose transmission fluid.
- Optimal friction characteristics even at low temperatures.
- Provides good wear protection also under heavy duty conditions.
- Gear protection, even under shock load conditions.
- Designed to extend drive line component life.
- Protects against rust and prevents corrosion.
- Provides good transmission lubrication.

PERFORMANCE CLASSIFICATION

CATERPILLAR TO-4. ALLISON C-4.

MANUFACTURERS' STANDARDS

ZF TE-ML 03C. Komatsu Micro-Clutch. Eaton /Fuller (certain manual transmissions, see operating manual). DANA (certain manual transmissions, see operating manual).

| Description | Pack Size | Part Number |
|----------------------------------|---------------|-------------|
| JCB Transmission Fluid EP SAE 30 | 4x5L | 4000/2601 |
| JCB Transmission Fluid EP SAE 30 | 20L | 4000/2605 |
| JCB Transmission Fluid EP SAE 30 | 200L | 4000/2603 |
| JCB Transmission Fluid EP SAE 30 | 1,000L - IBC | 4000/2645 |
| JCB Transmission Fluid EP SAE 30 | Bulk Pump off | On request |



JCB TORQUE CONVERTOR FLUID

A versatile product, designed to cater for the needs of both engines and transmissions. It is ideal for use in high performance diesel engines where a monograde SAE 10W is required. Rationalisation benefits can be obtained by using it as a gear and transmission lubricant.

JCB STANDARD:
4000/0200

BENEFITS

- Excellent anti-wear performance in both engine and transmissions.
- Excellent detergent/dispersant gives freedom from deposits and sludge.
- Universal product to suit many applications, reducing handling and storage Costs, also reduces the possibility of using incorrect wrong oil.
- Helps prevent corrosion and rust.

PERFORMANCE CLASSIFICATION

API CD / SF / CDII.

MANUFACTURERS' STANDARDS

MIL-L-46152C. MIL-L-2104C. CCMC G2, PD1, D2. MAN 270 (diesel engines, normal drain). Mercedes-Benz page 227.0 (diesel engines, normal drain). ZF TE-ML 03 (converter transmissions in mobile equipment). Allison C-3 (automatic transmissions). Caterpillar TO-2 (transmissions). Clark Form TLC-25 3M 8-83 (power shifted transmissions, torque converters). DANA Spicer Bulletin 2508-9 (mechanical transmissions, auxiliaries, transfer cases). Eaton/Fuller Bulletin 2052 (twin countershaft transmissions). Voith (retarder).

| Description | Pack Size | Part Number |
|----------------------------|---------------|-------------|
| JCB Torque Converter Fluid | 4x5L | 4000/0202 |
| JCB Torque Converter Fluid | 20L | 4000/0205 |
| JCB Torque Converter Fluid | 200L | 4000/0203 |
| JCB Torque Converter Fluid | 1,000L - IBC | 4000/0245 |
| JCB Torque Converter Fluid | Bulk Pump off | On request |

TRANSMISSION FLUIDS.



JCB CLUTCH FLUID OP

A highly specialised fluid designed for use in JCB Fastrac V-Tronic clutch systems. This fluid is also suitable for power steering, rear axle steering, level control, hydro-pneumatic suspension, shock absorbers, stability and traction systems (ABS/ASR/ASC) and central locking systems. It can also perform in many specialist applications, such as electro-hydraulic cabriolet actuation systems.

JCB STANDARD:
4002/1900

BENEFITS

- Designed for use in JCB Fastrac applications.
- A fully synthetic, optimum performance fluid.
- Designed to provide maximum performance throughout the service interval.
- Guaranteed performance at extreme temperatures (-40 deg C to 130 deg C).

PERFORMANCE CLASSIFICATION

DIN 51 524 T3. ISO 7308.

MANUFACTURERS' STANDARDS

Audi/VW TL 52 146.00. Ford Ford WSS-M2C204-A. MAN M 3289. MB 345.0. ZF TE-ML 02K. ISO 7308.

| Description | Pack Size | Part Number |
|---------------------|-----------|-------------|
| JCB Clutch Fluid OP | 4x1L | 4002/1904 |



JCB HP UNIVERSAL ATF

A versatile product recommended for automatic transmissions and power steering systems, where Dexron IIE and III approved products are acceptable. It is suitable for a variety of applications including: trucks and off-highway equipment.

JCB STANDARD:
4000/2300

BENEFITS

- Transmission life extended by wear protection.
- Immediate circulation in cold weather.
- Trouble free operation with smooth gear changing.
- Permits rationalisation, reducing product storage and handling costs and eliminates wrong ATF choice.
- Provides smooth power-steering operation.

PERFORMANCE CLASSIFICATION

DEXTON IIE AND III.

MANUFACTURERS' STANDARDS

Dexron ATF Type IIE, III. Ford Mercon M931004. Allison C-4, C4-18741793. Mercedes Benz 236.1, 236.5, 236.9, 236.10, 236.11, 236.12. MAN 339 type Z-I and V-I. ZF TE-ML 02F, 03D, 04D, 11B, 14A, 17C.

| Description | Pack Size | Part Number |
|----------------------|-----------|-------------|
| JCB HP Universal ATF | 4x5L | 4000/2301 |
| JCB HP Universal ATF | 20L | 4000/2305 |
| JCB HP Universal ATF | 200L | 4000/2303 |





GREASE.

JCB GREASES PROVIDE LONG LIFE PROTECTION TO HARD WORKING MACHINERY UNDER EXTREME CONDITIONS. THE COMPREHENSIVE RANGE OPTIMISES MAINTENANCE SCHEDULES HELPING TO REDUCE COSTS IN ALL APPLICATIONS.



Grease testing

JCB grease undertakes a rigorous programme of testing to ensure it provides the maximum performance and protection for your JCB machine.

JCB Engineering standards lay down performance levels and criteria for JCB grease which EXCEED INDUSTRY STANDARDS. The Four Ball Weld Test is a typical example of how JCB Grease outperforms other grease that claim to be the same.

Four ball weld test:

For this industry standard test grease is put under rotating speed and then a 450Kg load is applied. To pass the test the ball bearings have to last for 15 seconds before they 'fail' (seize) and weld together.

You can see below that the non JCB 'equivalent' grease fails immediately while the JCB HP Grease continues well past the required time. JCB grease is manufactured to provide significant load protection for your JCB and other off-highway machinery.



In this test the JCB product clearly outperformed both the low cost alternative and the industry standard requirement.

Choosing anything else but the approved JCB approved grease is a false economy which can lead to component wear and ultimately premature component failure.

JCB SPECIAL HP GREASE

JCB Special HP Grease is a premium quality, extreme pressure grease, recommended for use in arduous operating conditions, such as high temperatures, excessive loading and extensive exposure to water. The sophisticated additive package combines with excellent adhesive properties to give high performance protection to hard working automotive, industrial, agricultural and earthmoving equipment, all year round.

| | |
|-----------------------------------|------------------------|
| JCB STANDARD: | 4003/2000 |
| COLOUR: | BLUE |
| SOAP TYPE: | LITHIUM COMPLEX |
| NLGI: | 2 |
| DROP POINT (IP132): | 245°C |
| WORKING TEMPERATURE RANGE: | -20°C TO 150°C |
| FOUR BALL WELD: | 450KG |

| Description | Pack Size | Part Number |
|-----------------------|-----------|-------------|
| JCB Special HP Grease | 24x400g | 4003/2017 |
| JCB Special HP Grease | 12.5Kg | 4003/2006 |
| JCB Special HP Grease | 18Kg | 4003/2009 |
| JCB Special HP Grease | 50Kg | 4003/2005 |
| JCB Special HP Grease | 180Kg | 4003/2008 |

JCB SPECIAL MPL-EP GREASE

JCB Special MPL-EP Grease is a true multipurpose grease, recommended for a wide range of lubricating duties, such as pivot pins and wheel bearings, where excellent antiwear and antirust performance is required. Its EP additive makes it particularly suitable for the shock load and vibrating conditions found on automotive, industrial, agricultural and earthmoving equipment.

| | |
|-----------------------------------|-----------------------|
| JCB STANDARD: | 4003/1500 |
| COLOUR: | BROWN |
| SOAP TYPE: | LITHIUM |
| NLGI: | 2 |
| DROP POINT (IP132): | 180°C |
| WORKING TEMPERATURE RANGE: | -20°C TO 130°C |
| FOUR BALL WELD: | 315KG |

| Description | Pack Size | Part Number |
|---------------------------|-----------|-------------|
| JCB Special MPL-EP Grease | 24x400g | 4003/1501 |
| JCB Special MPL-EP Grease | 12.5Kg | 4003/1506 |
| JCB Special MPL-EP Grease | 18Kg | 4003/1508 |
| JCB Special MPL-EP Grease | 50Kg | 4003/1510 |

JCB EXTREME PERFORMANCE MOLY GREASE

JCB Extreme Performance Moly Grease is an advanced performance, multipurpose grease, recommended for heavily loaded bearing surfaces and in particular where limited or oscillating motion causes fretting. The addition of molybdenum disulphide provides extra protection against scoring and wear, making it ideal for automotive, industrial, agricultural and earthmoving equipment.

JCB STANDARD: 4003/1300
COLOUR: GREY BLACK
SOAP TYPE: LITHIUM
NLGI: 2
DROP POINT (IPI32): 185°C
WORKING TEMPERATURE RANGE: -20°C TO 120°C
FOUR BALL WELD: 315KG

| Description | Pack Size | Part Number |
|-------------------------------------|-----------|-------------|
| JCB Extreme Performance Moly Grease | 24x400g | 4003/1327 |
| JCB Extreme Performance Moly Grease | 12.5Kg | 4003/1326 |

JCB EXTREME PERFORMANCE HAMMER GREASE

JCB Extreme Hammer Grease is a unique formulation aluminium complex grease for use where extremes of pressure and temperature are likely to be encountered. Particularly suited to hammer applications where resistance to water washing and migration may be critical.

JCB STANDARD: 4003/2100
COLOUR: BLACK
SOAP TYPE: ALUMINIUM COMPLEX
NLGI: 2
DROP POINT (IPI32): 250°C
WORKING TEMPERATURE RANGE: -20°C TO 160°C
FOUR BALL WELD: 800KG

| Description | Pack Size | Part Number |
|---------------------------------------|-----------|-------------|
| JCB Extreme Performance Hammer Grease | 24x400g | 4003/2107 |
| JCB Extreme Performance Hammer Grease | 12.5Kg | 4003/2106 |

JCB SPECIAL SLIDE GREASE

JCB Special Slide Grease is formulated to provide excellent protection under heavy load and extreme pressure, where water and dirt are prevalent. It maintains a film of lubrication on slow moving slides by combining excellent resistance to squeeze out with superb corrosion resistance.

JCB STANDARD: 4003/1100
COLOUR: DARK GREY
SOAP TYPE: LITHIUM
NLGI: 2
DROP POINT (IPI32): 180°C
WORKING TEMPERATURE RANGE: -20°C TO 120°C
FOUR BALL WELD: 700KG

| Description | Pack Size | Part Number |
|--------------------------|-----------|-------------|
| JCB Special Slide Grease | 24x400g | 4003/1115 |

JCB SPECIAL HAMMER GREASE

JCB Special Hammer grease provides a highly effective lubricant on slow moving slides, along with an excellent corrosion resistant property. It combines the "self healing" action of oils with the resistance to drip of viscous compounds.

JCB STANDARD: 4003/1100
COLOUR: DARK GREY
SOAP TYPE: LITHIUM
NLGI: 2
DROP POINT (IPI32): 185°C
WORKING TEMPERATURE RANGE: -15°C TO 120°C
FOUR BALL WELD: 700KG

| Description | Pack Size | Part Number |
|---------------------------|-----------|-------------|
| JCB Special Hammer Grease | 24x400g | 4003/1119 |

JCB AUTOGREASE

JCB AUTOGREASE is for use with the JCB AUTOGREASE system, used on JCB's large breaker range. This mineral oil based paste, containing an aluminium complex soap and solid lubricants, is suitable for use under water, or in high ambient temperatures. The specially designed cartridges screw into the AUTOGREASE system fitted to the breaker housing. The clear cartridge allows the operator to easily monitor the grease usage from within the cab.

JCB STANDARD: 4003/2300
COLOUR: BLACK
SOAP TYPE: ALUMINIUM COMPLEX, SOLID LUBRICANTS
NLGI: 2
DROP POINT (IPI32): 260°C
WORKING TEMPERATURE RANGE: -20°C TO 110°C
FOUR BALL WELD: 345KG

| Description | Pack Size | Part Number |
|----------------|-----------|-------------|
| JCB Autogrease | 30x500g | 4003/2305 |

JCB SPECIAL SLEW PINION GREASE

JCB Special Slew Pinion Grease is a soft, black, tenacious grease designed specifically for the lubrication of large and heavy-duty open gears. Excellent corrosion protection and load carrying properties throughout a large temperature range.

JCB STANDARD: 4003/1619
COLOUR: BLACK
SOAP TYPE: ORGANICALLY MODIFIED CLAY
NLGI: 2
DROP POINT (IPI32): N/A
WORKING TEMPERATURE RANGE: -40°C TO 100°C

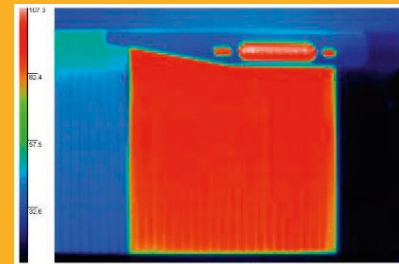
| Description | Pack Size | Part Number |
|----------------|-----------|-------------|
| JCB Autogrease | 24x500g | 4003/1619 |

ANCILLARY PRODUCTS.

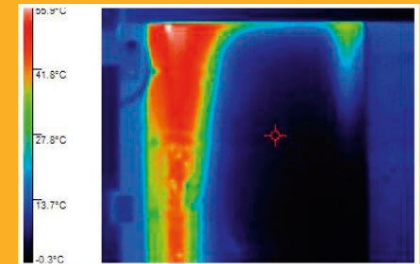
COMPREHENSIVE SELECTION OF GENUINE JCB APPROVED LUBRICANT RELATED PRODUCTS IS AVAILABLE FROM YOUR LOCAL JCB DEALER FOR ALL APPLICATIONS.



JCB ANTIFREEZE/COOLANT



THERMAL IMAGE OF RADIATOR OPERATING EFFICIENTLY USING JCB COOLANT.



THERMAL IMAGE OF BLOCKED RADIATOR USING NON JCB APPROVED COOLANT.



**JCB STANDARD:
4007/1000**

JCB ADBLUE

JCB as part of its strategy to meet Stage IV/Tier4 Final emissions legislation is introducing a Selective Catalytic Reduction (SCR) system on its 56kW to 129kW range of 4 cylinder Ecomax engines, for regions where this legislation is applicable.

As a consequence of this Ecomax strategy JCB Mid-range machines will have an AdBlue tank that requires filling with good quality, clean AdBlue. This is in addition to the JCB Fastrac and JCB 457 machines

As a result JCB Service has introduced the following range of AdBlue pack sizes to service this ever increasing demand:

| Description | Pack Size | Part Number |
|-------------|--------------|-------------|
| JCB AdBlue | 10L | 4007/1009 |
| JCB AdBlue | 18L | 4007/1008 |
| JCB AdBlue | 200L | 4007/1003 |
| JCB AdBlue | 1,000L - IBC | ON REQUEST |



JCB STANDARD:
4006/1100

JCB ANTIFREEZE HP/COOLANT

An ethylene glycol based engine coolant concentrate, tested and proven in heavy duty applications, using established inhibitor technology, it is phosphate and amine free. The sophisticated silicate stabilisation technology eliminates the formulation of silica gel, whilst other additives ensure excellent compatibility with hard water, preventing the build-up of scale. Antifreeze and coolant used in JCB T2 and T3 machines must conform to ASTM D6210 standard.

BENEFITS

- Manufactured to off highway standard ASTM D6210.
- Maximises engine performance.
- Superior freeze protect to -37°C (50% dilution).
- Guaranteed to be compatible with your JCB radiator and cooling pack.

MANUFACTURERS' STANDARDS

ASTM D3306. ASTM D4985. ASTM D6210. SAE J1034. BS6580 (1992). AFNOR NF R15-601.

| Description | Pack Size | Part Number |
|-----------------------------|-----------|-------------|
| JCB Antifreeze HP / Coolant | 4x5L | 4006/1101 |
| JCB Antifreeze HP / Coolant | 20L | 4006/1120 |
| JCB Antifreeze HP / Coolant | 200L | 4006/1103 |



JCB STANDARD:
4006/2100

JCB SPECIAL PLANTWASH

JCB Special Plantwash is formulated for use on all types of agricultural, commercial, industrial and earthmoving equipment. It removes dirt, oil, grease and traffic film economically, even when used in cold pressure washers.

BENEFITS

- Biodegradable - exceeds EC Standard 82/242.
- Use via a hot (max. 60°C) or cold pressure washer.
- Can be applied at low pressure for traffic film removal.
- Can be used at high pressure for degreasing.

| Description | Pack Size | Part Number |
|-----------------------|-----------|-------------|
| JCB Special Plantwash | 20L | 4006/2120 |
| JCB Special Plantwash | 200L | 993/99174 |



JCB STANDARD:
4006/1100

JCB READYMIX (50/50) ANTIFREEZE HP/COOLANT

JCB 50/50 antifreeze and engine coolant is an ethylene glycol based solution which combines superior antifreeze and coolant technology with de-mineralised water to provide a quick, easy and efficient solution to your antifreeze and coolant requirements. Ideal in helping prevent the build up of scale where the quality of water supply cannot be guaranteed.

MANUFACTURERS' STANDARDS

ASTM D3306. ASTM D4985. ASTM D6210. SAE J1034 3. BS6580 (1992). AFNOR NF R15-601.

| Description | Pack Size | Part Number |
|--|-----------|-------------|
| JCB Readymix (50/50) Antifreeze HP / Coolant | 4x5L | 4006/1110 |
| JCB Readymix (50/50) Antifreeze HP / Coolant | 20L | 4006/1115 |
| JCB Readymix (50/50) Antifreeze HP / Coolant | 200L | 4006/1125 |



JCB STANDARD:
4004/0500

WAXOYL

Recommended for use on telescopic booms and extending dippers, this highly effective rustproof is suitable for all plant and machinery. Waxoyl expels moisture and forms a self healing skin to prevent rust formation.

BENEFITS

- Excellent rust killer.
- Years of protection.
- Can be used to protect electrical systems from damp.

| Description | Pack Size | Part Number |
|-------------|-------------------|-------------|
| Waxoyl | 5L | 4004/0502 |
| Waxoyl | 6x400ml (Aerosol) | 4004/0501A |
| Waxoyl | 200L | 4004/0505 |

ANCILLARY PRODUCTS.



JCB SCREENCLEAR

This multi purpose product can be used to de-ice when sprayed neat, or diluted and used as a screenwash.

BENEFITS

- Protects down to -35°C.
- Removes traffic film, asphalt, oil and traces of insects.
- Does not harm paintwork or window rubbers.

JCB STANDARD:
4006/0500

| Description | Pack Size | Part Number |
|-----------------|-----------|-------------|
| JCB Screenclear | 12x1L | 4006/0504 |



JCB HYDRAULIC ANTI-STICK ADDITIVE

JCB Anti Stick Additive is specially designed to relieve the 'stickslip' phenomena that can occur with most hydraulic systems. Its friction modifier properties are designed to aid the flow characteristics of the hydraulic system and help relieve the hydraulic cylinder noise that often accompanies 'stick slip'. It is designed for hydraulic systems only and should NOT be used in common hydraulic, brake and transmission systems.

JCB STANDARD:
4004/6700

| Description | Pack Size | Part Number |
|-----------------------------------|-----------|-------------|
| JCB Hydraulic Anti-stick Additive | 1L | 4004/6704 |



JCB HIGH PERFORMANCE ANTI-SQUAWK FLUID

A performance supplement for gear oils designed to suppress brake chatter and squawk.

BENEFITS

- Fully approved for use on JCB machines.
- Specially developed for machines fitted with oil immersed brakes.

JCB STANDARD:
4004/3900

| Description | Pack Size | Part Number |
|--|-----------|-------------|
| JCB High performance Anti-Squawk Fluid | 4x1L | 4004/3904 |



JCB BRAKE DOT 4 FLUID

A performance supplement for gear oils designed to suppress brake chatter and squawk.

BENEFITS

- Fully approved for use on JCB machines.
- Specially developed for machines fitted with oil immersed brakes.

JCB STANDARD:
4002/0400

| Description | Pack Size | Part Number |
|-----------------------|-----------|-------------|
| JCB Brake DOT 4 Fluid | 12x1L | 4002/0404 |



JCB LIQUID MAINTENANCE

An ultrafine lubricant with a very high attraction to metal surfaces. Displaces and repels surface moisture and dust.

BENEFITS

- Free seized bolts.
- Expel moisture from electrical components.
- Protect stored tools against corrosion.

JCB STANDARD:
993/99000

| Description | Pack Size | Part Number |
|------------------------|-----------|-------------|
| JCB Liquid Maintenance | 6x400ml | 993/99166 |



JCB CHAIN LUBRICANT

A powerful blend of high penetration lubricant, dewatering agent and corrosion protector. Especially useful for open chain driven gears on agricultural machinery.

BENEFITS

- Prolongs chain life by deep penetration into linkages.
- Reduces wear by repelling dirt.
- Highly effective lubricant and protector.

JCB STANDARD:
4004/0200

| Description | Pack Size | Part Number |
|---------------------|-----------|-------------|
| JCB Chain Lubricant | 1x300ml | 4004/0237A |



JCB GLASS CLEANER

Excellent glass cleaning formulation for the removal of grime, oily film and insect debris.

BENEFITS

- Anti-smear formula.
- Effective on all reflective surfaces.
- Brilliant shine.

JCB STANDARD:
4006/3100

| Description | Pack Size | Part Number |
|-------------------|-----------|-------------|
| JCB Glass Cleaner | 6x750ml | 4006/3175 |



JCB CLEANER DEGREASER

A general purpose solvent based parts cleaner.

BENEFITS

- Removes most grease, oils and fines.
- Leaves no residue.
- Ideal for pre-bonding/sealing.

JCB STANDARD:
4104/1500

| Description | Pack Size | Part Number |
|-----------------------|-----------|-------------|
| JCB Cleaner Degreaser | 12x400ml | 4104/1557 |

ACCESSORIES.



GREASE GUN

- Designed to suit 400gm grease cartridges.

| Description | Part Number |
|---|-------------|
| Grease Gun - Standard Grip (5 per pack) | 992/11300 |
| Grease Gun - Pistol Grip | 992/11305 |

IBC ADBLUE/DEF - ELECTRIC PUMP

- With flow meter.
- Complete with nozzle.



Part Number: 990/89703



art Number: 990/89702

| Description | Part Number |
|---|-------------|
| IBC AdBlue - Electric Pump complete with Standard Nozzle | 990/89703 |
| IBC AdBlue - Electric Pump complete with Magnetic Misfilling Nozzle | 990/89702 |



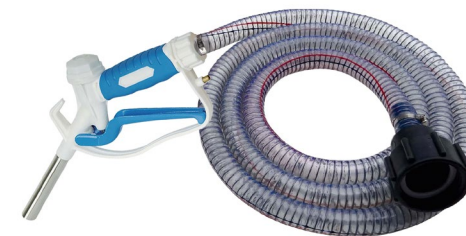
20L DRUM PUMP

- Suitable for use on a number of fluids.
- Suitable for oil.
- Suitable for AdBlue/DEF.

| Description | Part Number |
|---------------|-------------|
| 20/25ltr Pump | 990/89707 |

IBC ADBLUE/DEF - GRAVITY FED DISPENSER

- Connector.
- Nozzle.



| Description | Part Number |
|---|-------------|
| IBC AdBlue - Gravity Fed Connector & Nozzle | 990/89704 |



200L BARREL PUMP - STEEL

- Steel Construction.
- Delivers high volume 2100 litres/hour (460 gallons/hour).
- Handles both diesel and oil from barrels.
- Hand operated, easy to use.
- Dual Thread.
- Not suitable for AdBlue/DEF.

| Description | Part Number |
|--------------------------|-------------|
| 200L Barrel Pump - Steel | 990/89700 |



200L BARREL PUMP - PLASTIC

- Plastic 200l barrel pump.
- Complete with tube/spout.
- Suitable for use on a number of fluids.
- Suitable for AdBlue/DEF.

| Description | Part Number |
|----------------------------|-------------|
| 200L Barrel Pump - Plastic | 990/89701 |



ROTARY BARREL PUMP

- Capable of handling a wide variety of liquids.
- Will deliver and retrieve.
- Delivers up to 840 litres/hour.
- Not suitable for AdBlue/DEF.

| Description | Part Number |
|--------------------|-------------|
| Rotary Barrel Pump | 990/89600 |



GREASE PUMP

- Designed to suit 12.5kg and 18.5kg kegs.
- Complete with follower plate.

| Description | Part Number |
|-------------|-------------|
| Grease Pump | 993/79300 |



SUBMERSIBLE REFUELLING PUMP KIT

- Delivers high volume 1090 litres/hour (240 gallons/hour).
- No effort involved - works from 12 volt battery.
- Handles both diesel and oil. Kit includes lead with crocodile clips, hose and plug for direct connection into beacon socket or protrusion plate light socket.
- NB: Not designed to run dry.

| Description | Part Number |
|---------------------------------|-------------|
| Submersible Refuelling Pump Kit | 121/10400 |



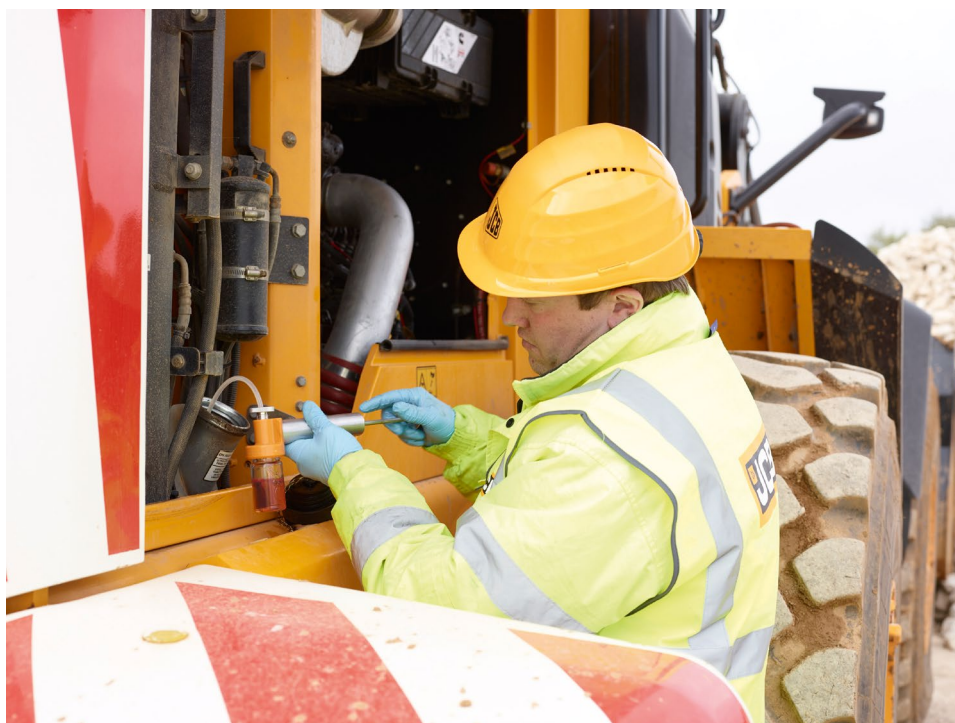
MEASURING JUGS

- Moulded in tough polythene.
- Unaffected by oil, petrol, diesel, paraffin, antifreeze, brake fluid, battery acid, etc.
- Easy measurement of oil.

| Description | Part Number |
|------------------------|-------------|
| Measuring Jug - 1.5ltr | 990/89800 |
| Measuring Jug - 5ltr | 990/89900 |

OIL AND DIESEL FUEL SAMPLING.

IN RESPONSE TO THE INCREASING NEED FOR OIL AND DIESEL FUEL ANALYSIS JCB SERVICE OFFERS A COMPREHENSIVE SAMPLING SERVICE TO JCB DEALERS AND JCB CUSTOMERS, IN ADDITION ONCE AN ACCOUNT HAS BEEN SET UP RESULTS CAN BE VIEWED ON LINE.



Routine sampling and testing:

Use this analysis type for one off sample or long term health monitoring. Routine sampling during the servicing builds up an on-going picture of the oil in a component. Each sample includes a chart of the previous samples and highlights any abnormality observed. This gives an opportunity for proactive action to be taken in the event that a problem is highlighted before a component fails. Listed below are assemblies from which oil samples can be taken and monitored.

- Engines
- Hydraulics
- Transmissions
- Gearboxes
- Final Drives/hubs

View results on-line

Once you receive your sampling pack, simply set-up and account with the sample company to enable you to view your results on-line.

UK Part Numbers:

| Description | Pack Size | Part Number |
|---|-----------|-------------|
| UK - Routine sample Oil or Diesel | 1 | 998/10423 |
| UK - Enhanced analysis Oil or Diesel | 1 | 998/10001 |
| UK - Comprehensive Diesel Fuel analysis to BS2869 | 1 | 998/10002 |
| UK - Postage paid bag to send above samples back* | 4 | 333/H9217 |
| UK - Vacuum pump kit (To take samples) | 1 | 998/10424 |

*This is a postage paid bag that will ensure that Royal mail will carry the oil or fuel 'sample'.

Non UK Part Numbers:

| Description | Pack Size | Part Number |
|---|-----------|-------------|
| Non UK - Routine sample Oil or Diesel | 1 | 998/10003 |
| Non UK - Enhanced analysis Oil or Diesel | 1 | 998/10004 |
| Non UK - Comprehensive Diesel Fuel analysis to BS2869 | 1 | 998/10005 |
| Non UK - Vacuum pump kit (To take samples) | 1 | 998/10424 |

Non UK samples are to be sent direct from JCB Dealer or customer via a courier. See Techweb bulletin 6704 or MI 1136 for full details and shipping documentation.

Non Routine sampling and testing:

This will assist with diagnostic activities and be used on the following:

- AdBlue
- Basic fuel testing
- Verification of engine oil testing
- Engine coolant test
- Other

Comprehensive fuel testing:

Use this analysis type for depth testing of the diesel fuel where components have failed and a high level of data and supporting evidence is required. This test will determine whether the fuel meets BS2869:2010 specification.

PAINT SELECTOR.

JCB OFFER YELLOW, BLACK AND GREY LEAD/CHROME FREE PAINT TO MATCH ALL JCB MACHINES. DETAILED BELOW ARE ALL THE PART NUMBERS YOU WILL NEED, AS THE RANGE JCB OFFER WILL MATCH ALL CURRENT MACHINES ELIMINATING THE COSTLY AND TIME CONSUMING ACTIVITY OF TRYING TO MATCH UP PAINTS LOCALLY WHICH MAY PROVE TO BE AN UNRELIABLE MATCH.

SINGLE PACK: FOR 'REPAIR' OF DAMAGED PAINTWORK

| Part Number | Description | Pack Type | Unit of Issue | Activator | Thinner (if required) |
|-------------|---------------------------------|-----------|---------------------|----------------|----------------------------|
| 4220/0402 | JCB Yellow Gloss | 2.5L Tin | 1 x 2.5L Tin | Not Applicable | White Spirit Based Thinner |
| 4220/0406 | JCB Yellow Gloss | Aerosol | 12 x 400ml Aerosols | Not Applicable | Not Applicable |
| 4221/5902 | JCB Light Buff Undercoat/Primer | 2.5L Tin | 1 x 2.5L Tin | Not Applicable | White Spirit Based Thinner |
| 4221/5906 | JCB Light Buff Undercoat/Primer | Aerosol | 12 x 400ml Aerosols | Not Applicable | Not Applicable |
| 4200/4102 | JCB Black 40% Semi Gloss | 2.5L Tin | 1 x 2.5L Tin | Not Applicable | White Spirit Based Thinner |
| 990/00072 | JCB Black 40% Semi Gloss | Aerosol | 12 x 400ml Aerosols | Not Applicable | Not Applicable |
| 990/00074 | JCB Grey Primer | Aerosol | 1 x 400ml Aerosol | Not Applicable | Not Applicable |
| 4201/0546 | JCB Storm Grey Single Pack | Aerosol | 12 x 400ml Aerosol | Not Applicable | Not Applicable |

TWO PACK: FOR A 'PROFESSIONAL' FINISH

| Part Number | Description | Pack Type | Unit of Issue | Activator | Thinner (if required) |
|-------------|-----------------------------------|-----------|---------------|---|-----------------------|
| 4222/0602 | JCB Yellow Gloss 2 Pack (Non ISO) | 2.5L Tin | 1 x 2.5L Tin | 4209/103 I (Mix: 3 Base to 2 Activator) | 4200/9203 |
| 4202/1532 | JCB Black - 2 Pack | 2.5L Tin | 1 x 2.5L Tin | 4209/103 I (Mix :3 Base to 2 Activator) | 4200/9203 |

If your customer buys a NON JCB paint (Lead free or Lead containing) and applies it to a JCB machine – **IT MAY NOT BE A RELIABLE OR EXACT MATCH!**

The only way to guarantee a reliable match is to use JCB GENUINE PAINT - Namely the same source of paint as the original machine manufacture.

THE RANGE.

| JCB ENGINE OIL | 1 Litre | 4x5 Litre | 20 Litre | 200 Litre | IBC 1,000 Litre | Bulk 1,000 Litre (UK only) |
|-------------------------------------|---------|-----------|-----------|-----------|-----------------|----------------------------|
| JCB Engine Oil UP 10W30 | - | 4001/3001 | 4001/3005 | 4001/3003 | 4001/3045 | - |
| JCB Engine Oil UP 15W40 | - | 4001/2901 | 4001/2905 | 4001/2903 | 4001/2945 | - |
| JCB Engine Oil UP 5W30 | - | 4001/3101 | 4001/3105 | 4001/3103 | 4001/3145 | - |
| JCB Engine Oil OP 15W40 | - | 4001/2801 | 4001/2805 | 4001/2803 | 4001/2845 | - |
| JCB Engine Oil EP 15W40 | - | 4001/1801 | 4001/1805 | 4001/1803 | 4001/1845 | 4001/1815 |
| JCB Engine Oil HP 15W40 | - | 4001/1501 | 4001/1505 | 4001/1503 | 4001/1545 | 4001/1515 |
| JCB Engine Oil HP 20W50 | - | - | 4001/1905 | 4001/1903 | - | - |
| JCB Engine Oil HP 10W30 | - | 4001/1701 | 4001/1705 | 4001/1703 | 4001/1745 | - |
| JCB Engine Oil HP SAE30 | - | 4001/0302 | 4001/0305 | 4001/0301 | - | - |
| JCB Engine Oil EP 5W40 | - | 4001/2701 | 4001/2705 | 4001/2703 | 4001/2745 | - |
| JCB Engine Oil FE Cold Climate 5W30 | - | 4001/3301 | 4001/3305 | 4001/3303 | 4001/3345 | - |

| JCB HYDRAULIC FLUID | 1 Litre | 4x5 Litre | 20 Litre | 200 Litre | IBC 1,000 Litre | Bulk 1,000 Litre (UK only) |
|--|-----------|-----------|-----------|-----------|-----------------|----------------------------|
| JCB Hydraulic Fluid OP 46 | - | 4002/2001 | 4002/2005 | 4002/2003 | 4002/2045 | - |
| JCB Hydraulic Fluid EP 46 | - | - | 4002/1605 | 4002/1603 | 4002/1645 | 4002/1615 |
| JCB Hydraulic Fluid HP 46 | - | 4002/0801 | 4002/0805 | 4002/0803 | 4002/0845 | 4002/0815 |
| JCB Hydraulic Fluid Biodegradable 46 | - | - | 4002/2605 | 4002/2603 | 4002/2645 | - |
| JCB Hydraulic Fluid UP Cold Climate 32 | - | - | 4002/2805 | 4002/2803 | - | - |
| JCB Hydraulic Fluid HP 32 | - | 4002/1001 | 4002/1025 | 4002/1024 | 4002/1045 | 4002/1015 |
| JCB Hydraulic Fluid HP 15 | 4002/0501 | 4002/0503 | - | - | - | - |
| JCB Hydraulic Fluid OP 68 | - | 4002/2701 | 4002/2705 | 4002/2703 | 4002/2745 | - |
| JCB Hydraulic Fluid HP 68 | - | - | 4002/0705 | 4002/0701 | - | - |

| JCB GEAR OIL | 1 Litre | 4x5 Litre | 20 Litre | 200 Litre | IBC 1,000 Litre | Bulk 1,000 Litre (UK only) |
|------------------------|-----------|-----------|-----------|-----------|-----------------|----------------------------|
| JCB Gear Oil OP | - | 4000/3701 | 4000/3705 | 4000/3703 | 4000/3745 | - |
| JCB Gear Oil EP 85W140 | - | - | 4000/0605 | 4000/0603 | 4000/0645 | 4000/0615 |
| JCB Gear Oil EP 80W90 | 4004/5104 | - | 4004/5105 | 4004/5103 | - | - |
| JCB Gear Oil HP | - | - | 4000/0505 | 4000/0503 | - | - |
| JCB Gear Oil HP Plus | - | 4000/2202 | 4000/2205 | 4000/2203 | 4000/2245 | 4000/2215 |
| JCB Gear Oil HP 90 | - | 4000/0301 | 4000/0305 | 4000/0303 | 4000/0345 | 4000/0315 |
| JCB Gear Oil LS Plus | - | 4000/3901 | 4000/3905 | 4000/3903 | 4000/3945 | - |

| JCB TRANSMISSION FLUID | 1 Litre | 4x5 Litre | 20 Litre | 200 Litre | IBC 1,000 Litre | Bulk 1,000 Litre (UK only) |
|---------------------------------|---------|-----------|-----------|-----------|-----------------|----------------------------|
| JCB Universal HP ATF | - | 4000/2301 | 4000/2305 | 4000/2303 | - | - |
| JCB Transmission Fluid EP 10W | - | 4000/2501 | 4000/2505 | 4000/2503 | 4000/2545 | - |
| JCB Transmission Fluid EP SAE30 | - | 4000/2601 | 4000/2605 | 4000/2603 | 4000/2645 | - |
| JCB Torque Convertor Fluid | - | 4000/0202 | 4000/0205 | 4000/0203 | 4000/0245 | - |
| JCB Transmission Fluid OP | - | - | 4004/6305 | - | - | - |
| JCB Clutch Fluid OP 4002/1904 | - | 4002/1904 | - | - | - | - |

| JCB UNIVERSAL TRACTOR OIL | 1 Litre | 4x5 Litre | 20 Litre | 200 Litre | IBC 1,000 Litre | Bulk 1,000 Litre (UK only) |
|--------------------------------|---------|-----------|-----------|-----------|-----------------|----------------------------|
| JCB Universal Agricultural Oil | - | - | 4004/0305 | 4004/0302 | 4004/0345 | 4004/0315 |

| JCB GREASE | 400g | 500g | 12.5kg | 18kg | 50kg | 180kg |
|---------------------------------------|-----------|-----------|-----------|-----------|-----------|-----------|
| JCB Special HP Grease | 4003/2017 | - | 4003/2006 | 4003/2009 | 4003/2005 | 4003/2008 |
| JCB Special MPL-EP Grease | 4003/1501 | - | 4003/1506 | 4003/1508 | 4003/1510 | - |
| JCB Special Slew Pinion Grease | 4003/1619 | - | - | - | - | - |
| JCB Extreme Performance Moly Grease | 4003/1327 | - | 4003/1326 | - | - | - |
| JCB Special Slide Grease | 4003/1115 | - | - | - | - | - |
| JCB Special Hammer Grease | 4003/1119 | - | - | - | - | - |
| JCB Extreme Performance Hammer Grease | 4003/2107 | - | 4003/2106 | - | - | - |
| JCB Autogrease | - | 4003/2305 | - | - | - | - |

| JCB ANTIFREEZE | 4x5 Litre | 20 Litre | 200 Litre | IBC 1,000 Litre |
|---|-----------|-----------|-----------|-----------------|
| JCB Antifreeze HP / Coolant - Concentrate | 4006/1101 | 4006/1120 | 4006/1103 | - |
| JCB Antifreeze HP / Coolant - Readymix | 4006/1110 | 4006/1115 | 4003/1125 | - |
| JCB Si-OAT Antifreeze OP / Coolant - Readymix | 4006/1305 | - | - | - |

| JCB ANCILLIARIES | 1 Litre | 10 Litre | 20 Litre | 200 Litre | IBC 1,000 Litre |
|--|-------------------|-----------|-----------------|-----------|-----------------|
| JCB AdBlue | - | 4007/1009 | 4007/1008 (18L) | 4007/1003 | On Request |
| JCB Plantwash | - | - | 4006/2120 | 993/99174 | - |
| JCB Screenclear | 4006/0504 | - | - | - | - |
| JCB Hydraulic Anti-stick Additive | 4004/6704 | - | - | - | - |
| JCB High Performance Anti-Squawk Fluid | 4004/3904 | - | - | - | - |
| JCB Brake Dot 4 Fluid | 4002/0404 | - | - | - | - |
| JCB Glass Cleaner spray | 4006/3175 (750ml) | - | - | - | - |

| JCB WORKSHOP AEROSOLS | 400 ml |
|----------------------------------|--------------------|
| JCB Liquid Maintenance | 993/99166 |
| JCB Cleaner / Degreaser | 4104/1557 |
| JCB Penetrating Fluid + Graphite | 891/04021 |
| JCB Silicone Lubricant | 891/04022 |
| JCB Electrical Cleaner | 891/04023 |
| JCB Maintenance Spray | 891/04024 |
| JCB Wire Rope & Chain Lubricant | 891/04025 |
| JCB White Grease + PTFE | 891/04026 |
| JCB Cockpit Shine | 891/04027 |
| JCB Degreaser Spray | 891/04029 |
| Waxoyl | 4004/0501A |
| JCB Chain Lubricant | 4004/0237A (300ml) |

| JCB PAINT | | 400ml Aerosol (x12) | 2.5 Litre | 5 Litre |
|---------------------------------|-------------|---------------------|-----------|-----------|
| JCB Yellow Gloss | Single Pack | 4220/0406 | 4220/0402 | - |
| JCB Light buff undercoat/Primer | Single Pack | 4221/5906 | 4221/5902 | - |
| JCB Black 40% Semi gloss | Single Pack | 990/00072 | 4200/4102 | - |
| JCB Grey primer | Single Pack | 990/00074 (x1) | - | - |
| JCB Storm Grey | Single Pack | 4201/0546 | - | - |
| JCB Yellow Gloss | Two Pack | - | 4222/0602 | - |
| JCB Black | Two Pack | - | 4202/1532 | - |
| Activator | Two Pack | - | 4209/1031 | - |
| JCB Thinner | Two Pack | - | - | 4200/9203 |

* For paint selection and application advice see 'Paint Selection' on page 33

| OIL SAMPLING | UK | Non-UK |
|--|-----------|-----------|
| Routine Sample Oil or Diesel | 998/10423 | 998/10003 |
| Enhanced Analysis Oil or Diesel | 998/10001 | 998/10004 |
| Comprehensive Diesel Fuel Analysis to BS2869 | 998/10002 | 998/10005 |
| Postage Paid Bag to Send Samples Back | 333/H9217 | N/A |
| Vacuum Pump to Take Samples | 998/10424 | 998/10424 |



World Parts Centre, Beamhurst, Uttoxeter, Staffordshire ST14 5PA www.jcb.com